



WELLS + ASSOCIATES

Town of Lyons

Traffic Data Collection

August 2019

Purpose and Background

Data was collected throughout the Town of Lyons for a “typical” week. The intent of the data is to better inform future planning and engineering projects.

- Tuesday July 9th – Tuesday July 16th (24 hours/7 days)
- Classification, Speed, and Volume “Tube” Count
- 5 Key intersections

Count Locations



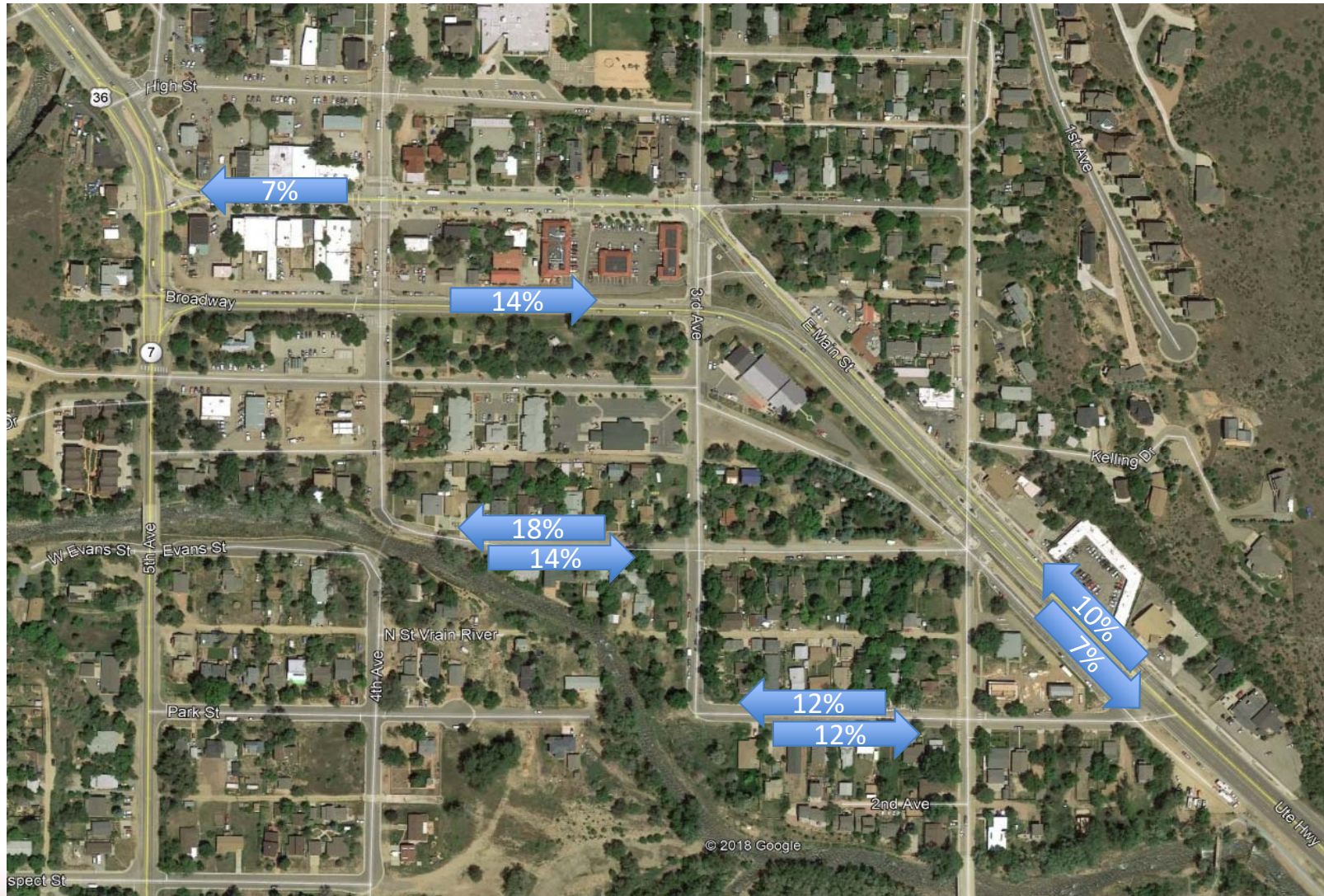
Heavy Vehicles (HV)

FHWA Vehicle Classifications

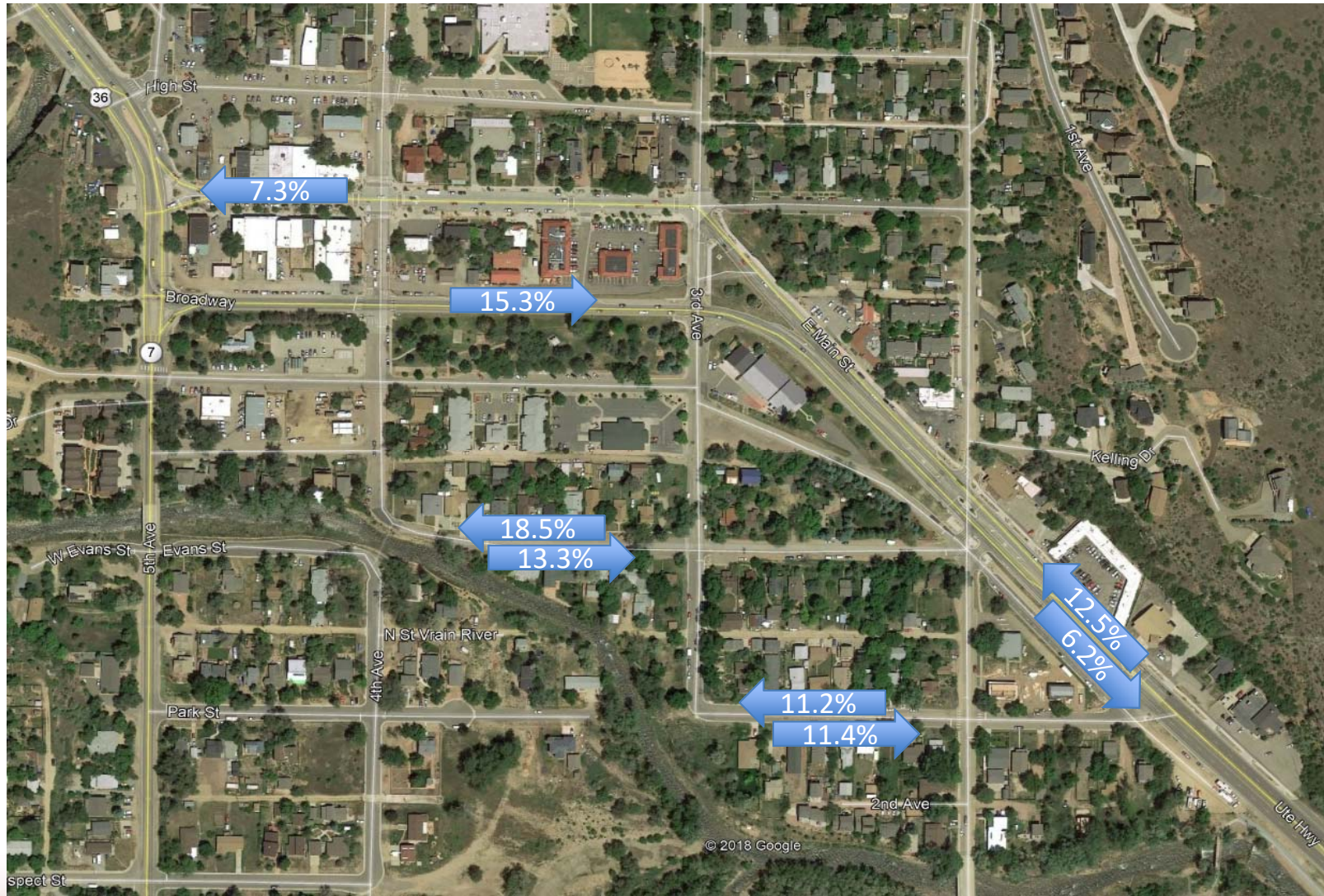
Heavy
Vehicle
(HV)

- Class 1 – Motorcycles
- Class 2 – Passenger Cars
- Class 3 – Other Two-Axle, Four-Tire Single Unit Vehicles
- Class 4 – Buses
- Class 5 – Two-Axle, Six-Tire, Single-Unit Trucks
- Class 6 – Three-Axle Single-Unit Trucks
- Class 7 – Four or More Axle Single-Unit Trucks
- Class 8 – Four or Fewer Axle Single-Trailer Trucks
- Class 9 – Five-Axle Single-Trailer Trucks
- Class 10 – Six or More Axle Single-Trailer Trucks
- Class 11 – Five or fewer Axle Multi-Trailer Trucks
- Class 12 – Six-Axle Multi-Trailer Trucks
- Class 13 – Seven or More Axle Multi-Trailer Trucks

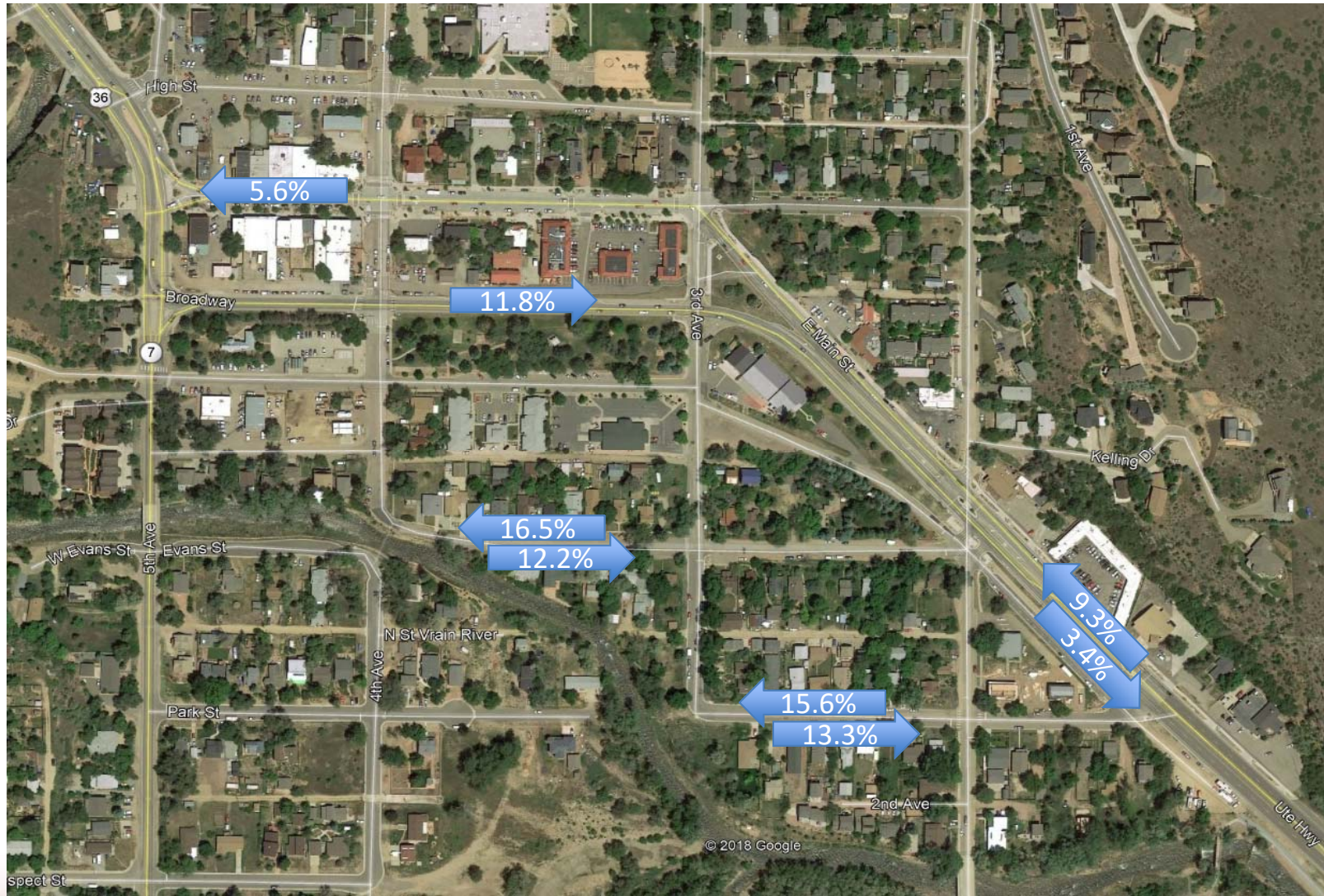
Study Period Average HV %



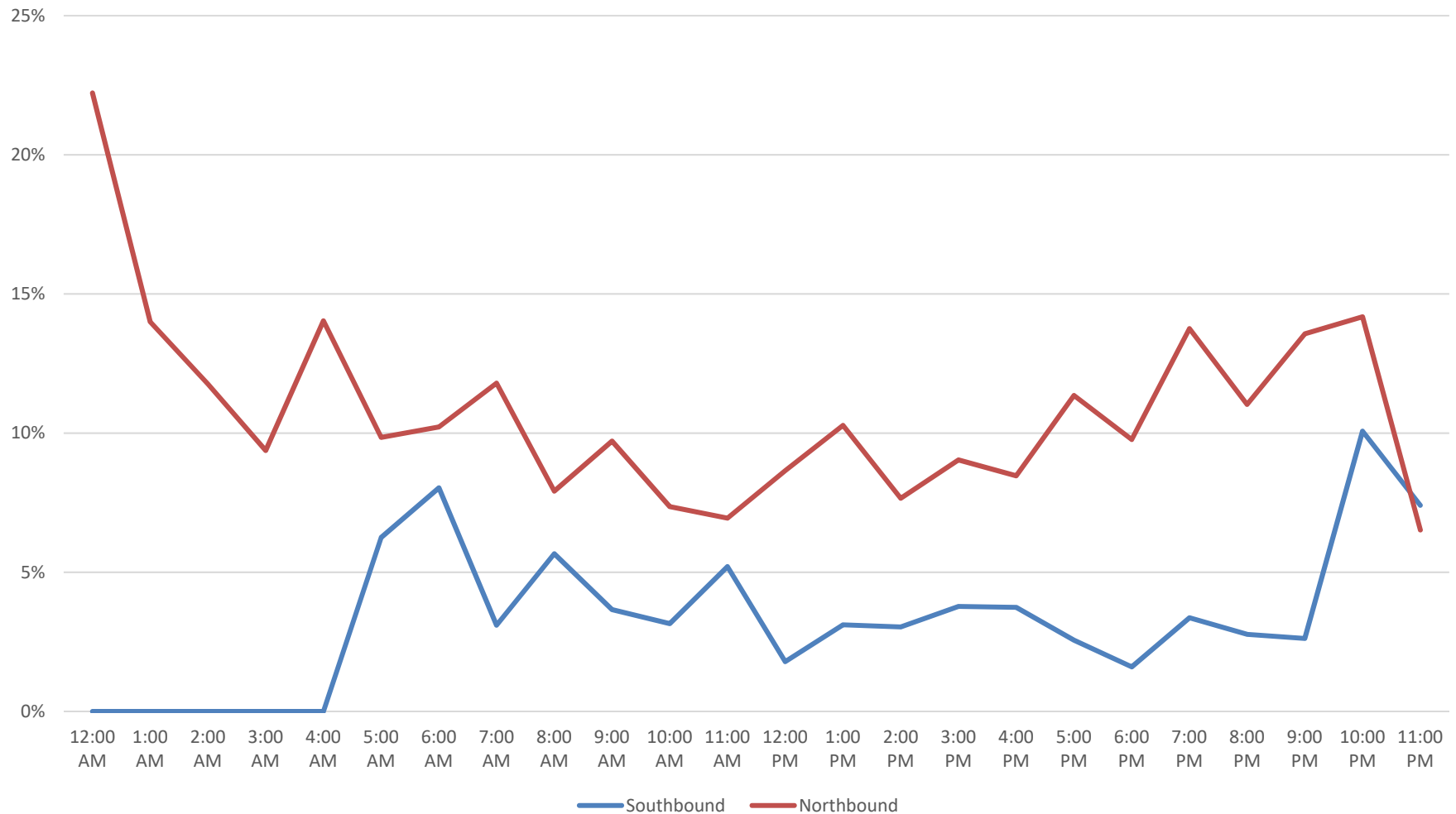
Tuesday-Thursday Average HV %



Saturday HV %

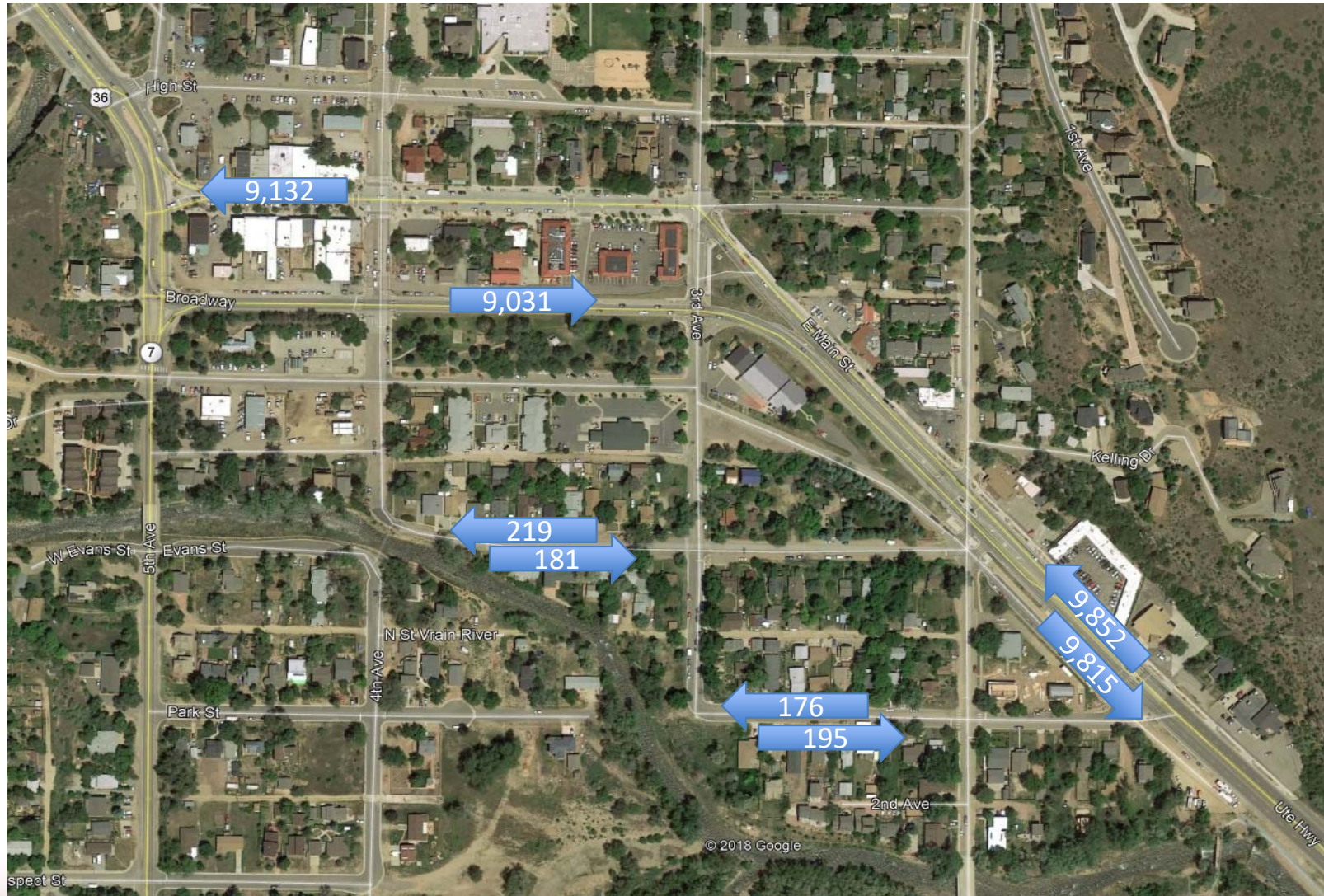


Saturday HV % Main Street (Site 1)

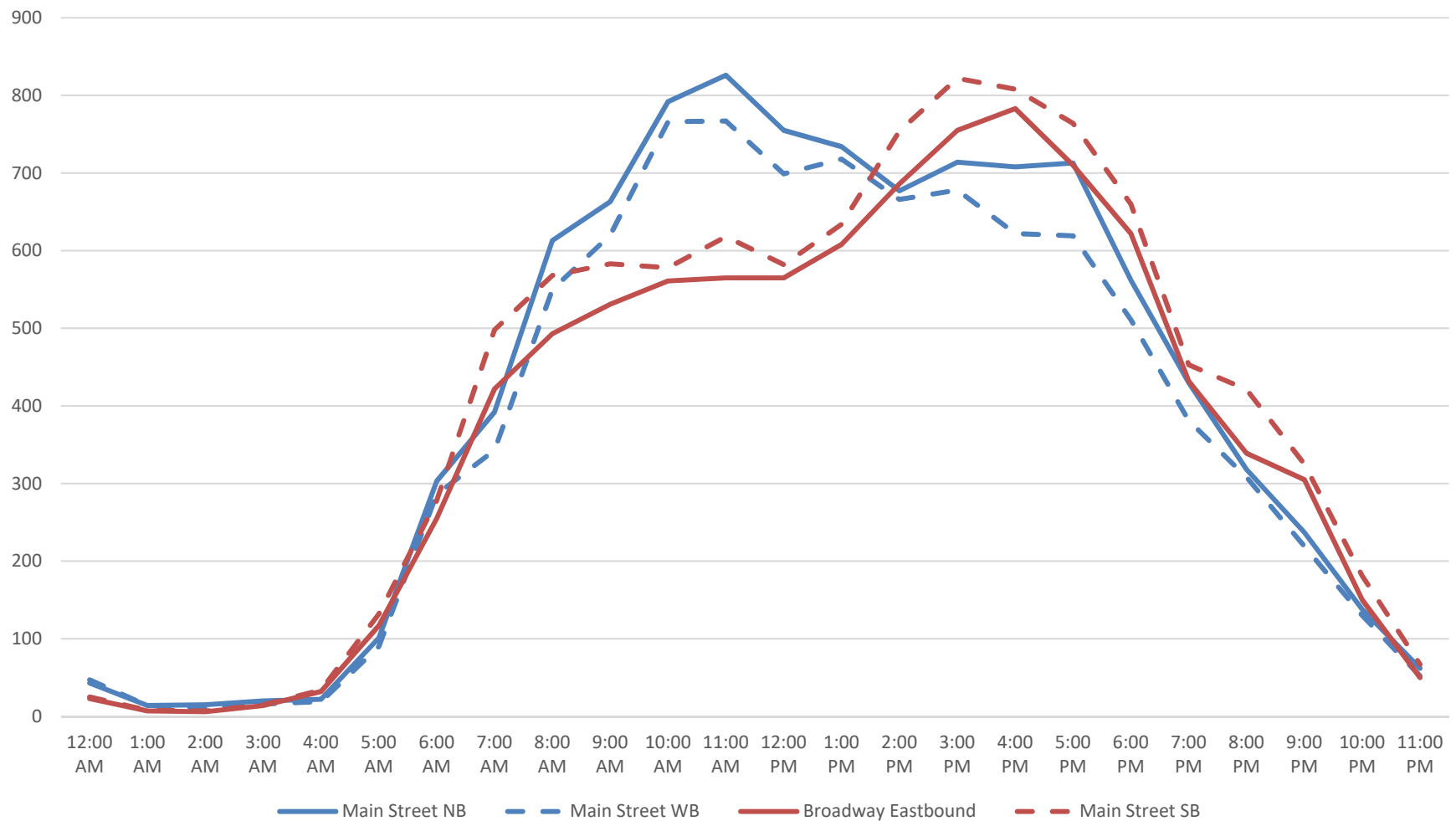


Volume

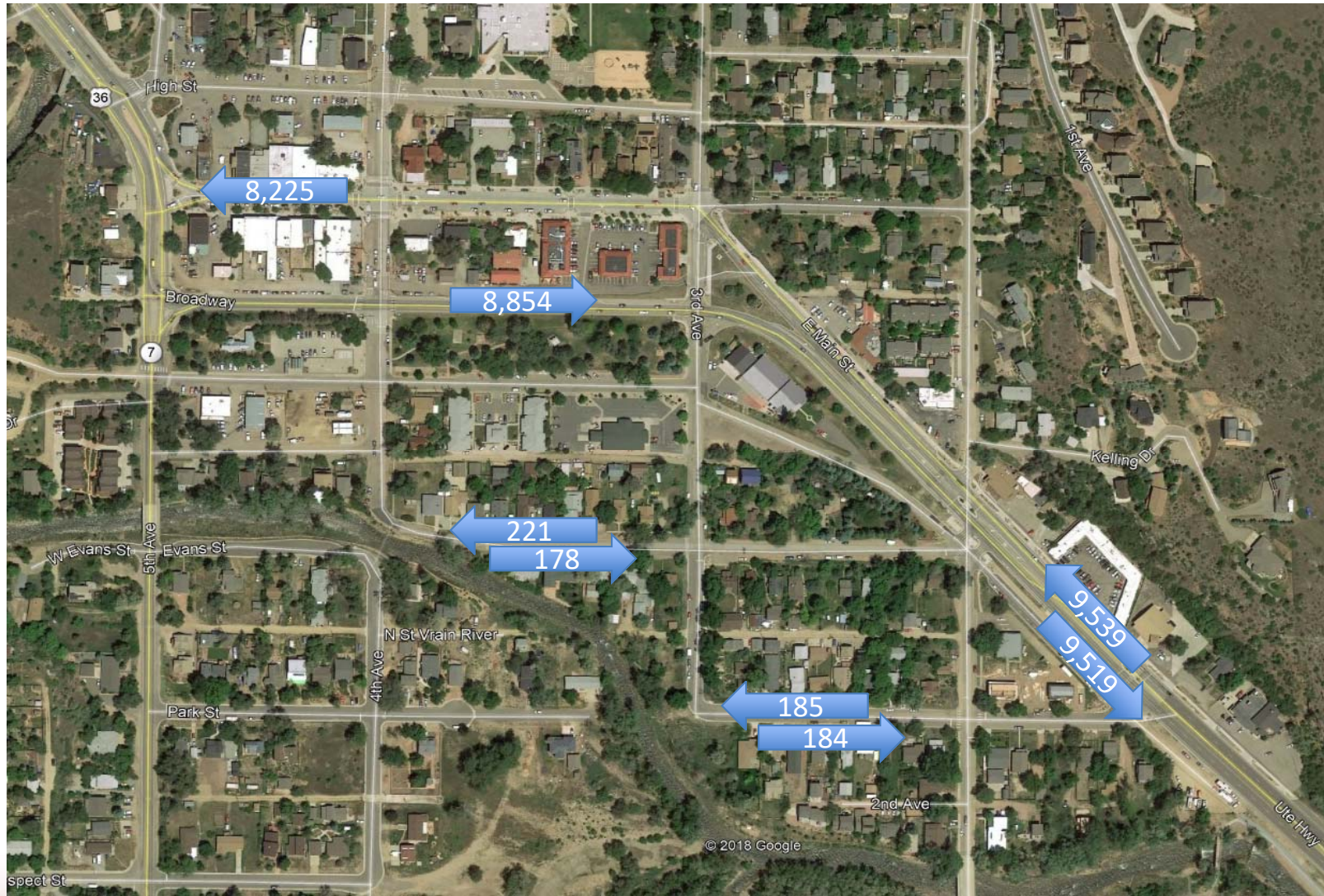
Thursday Average Daily Traffic (ADT)



Thursday Average Daily Traffic (ADT)



Mid-Week Volume Average Daily Traffic (ADT)

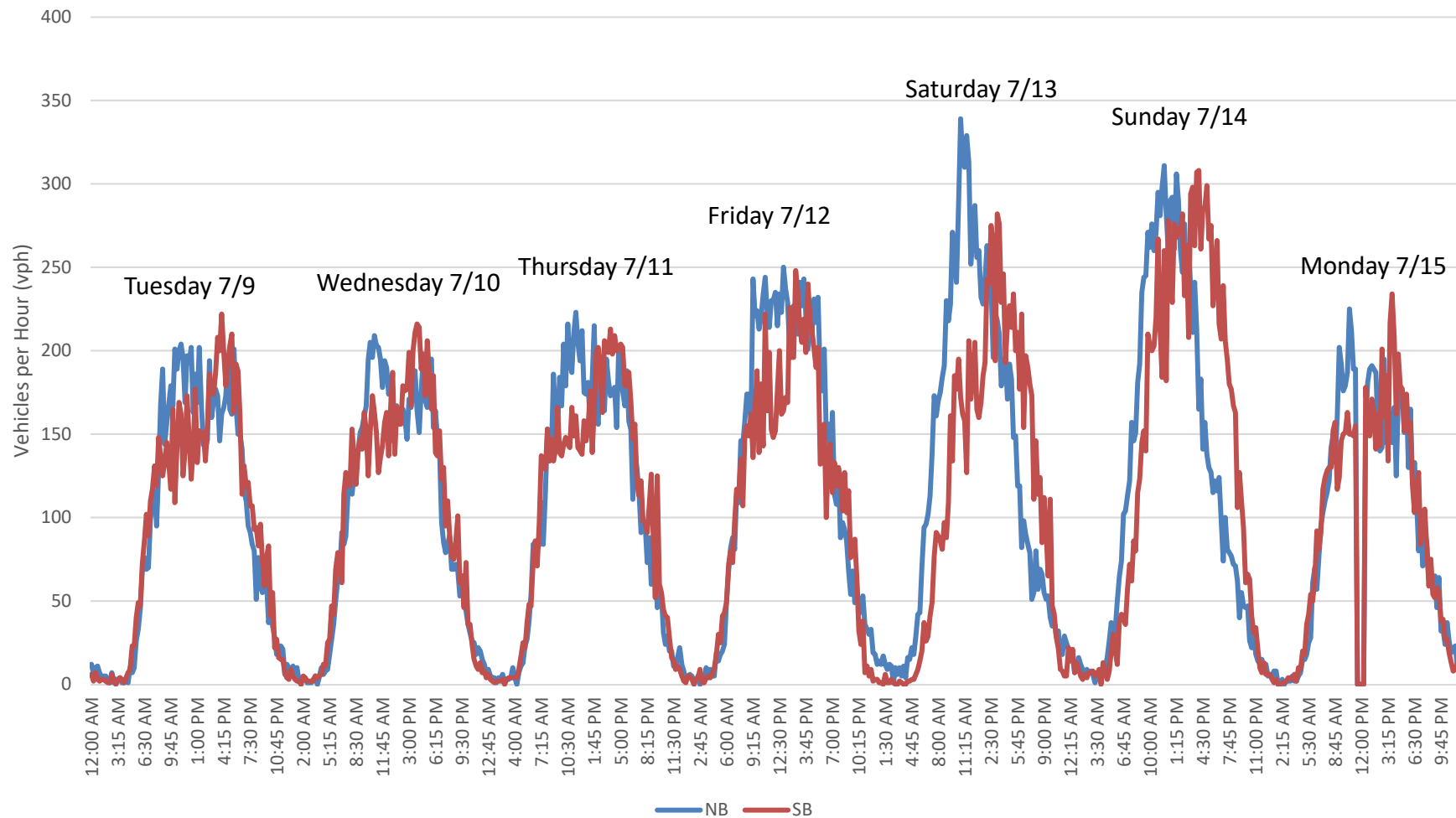


Saturday Volume ADT & (% increase over Mid-Week)



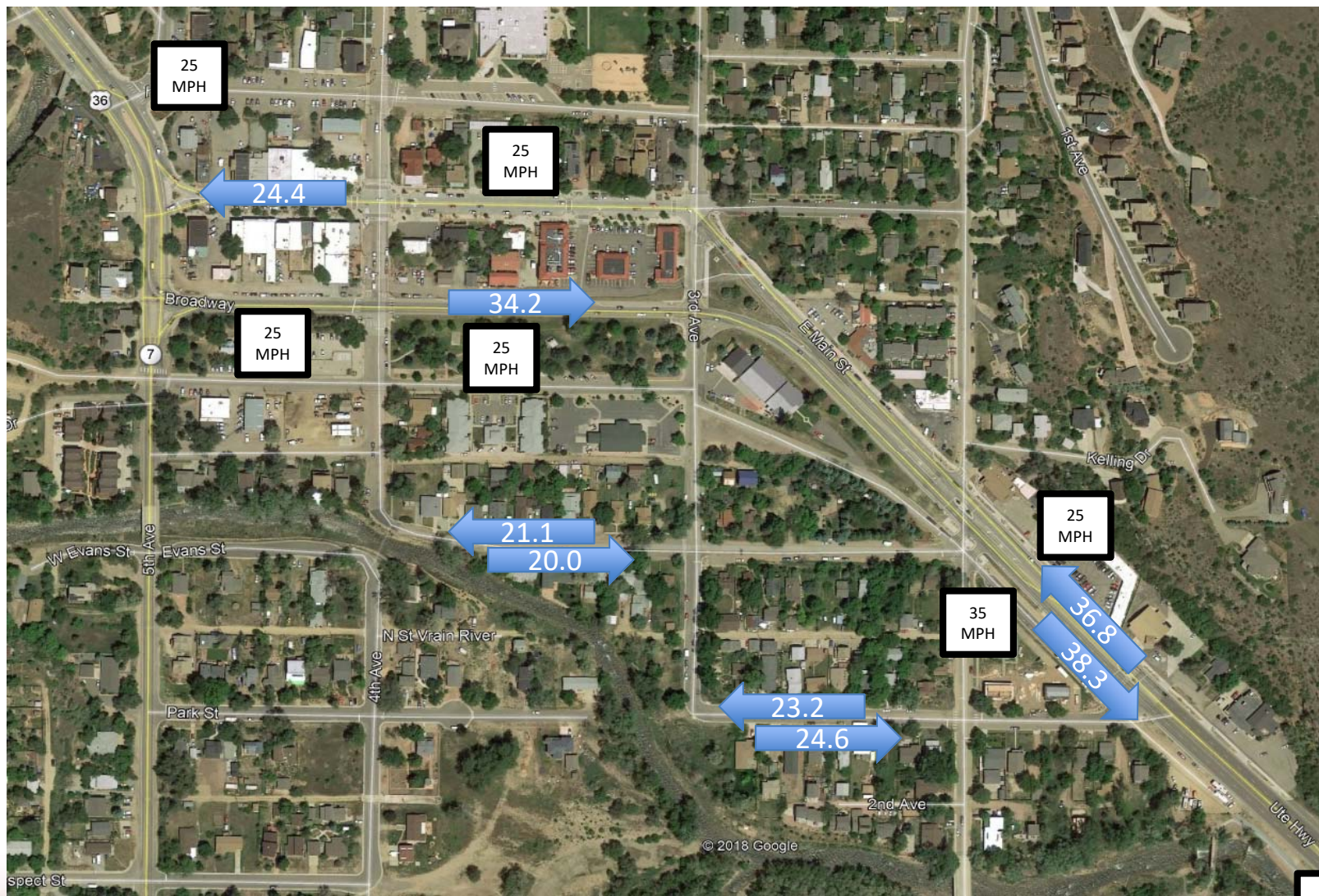
*counter error portion of day

Site 1 Weekly Hourly Volume

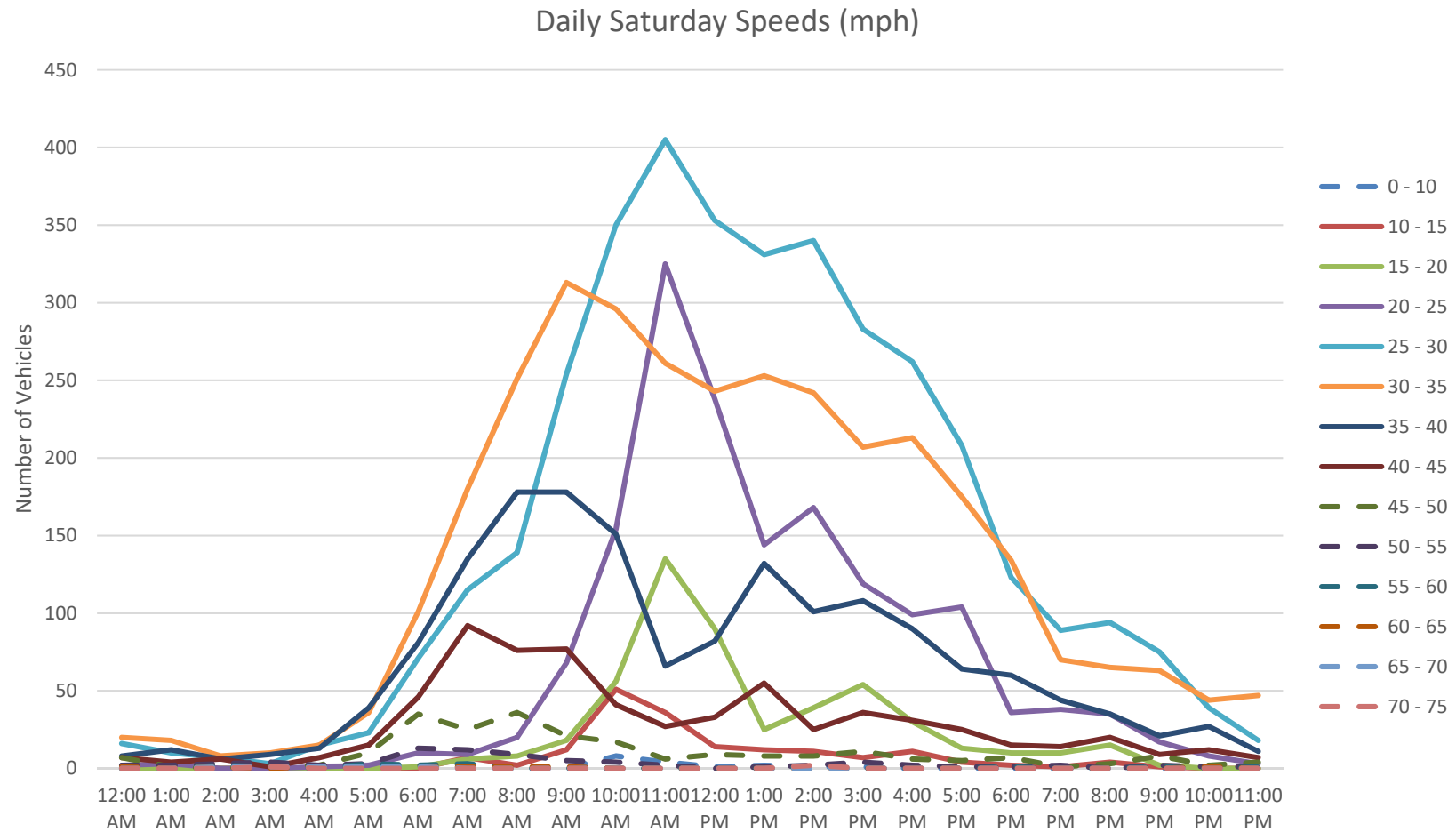


Speed

85th Percentile Speeds (mph)

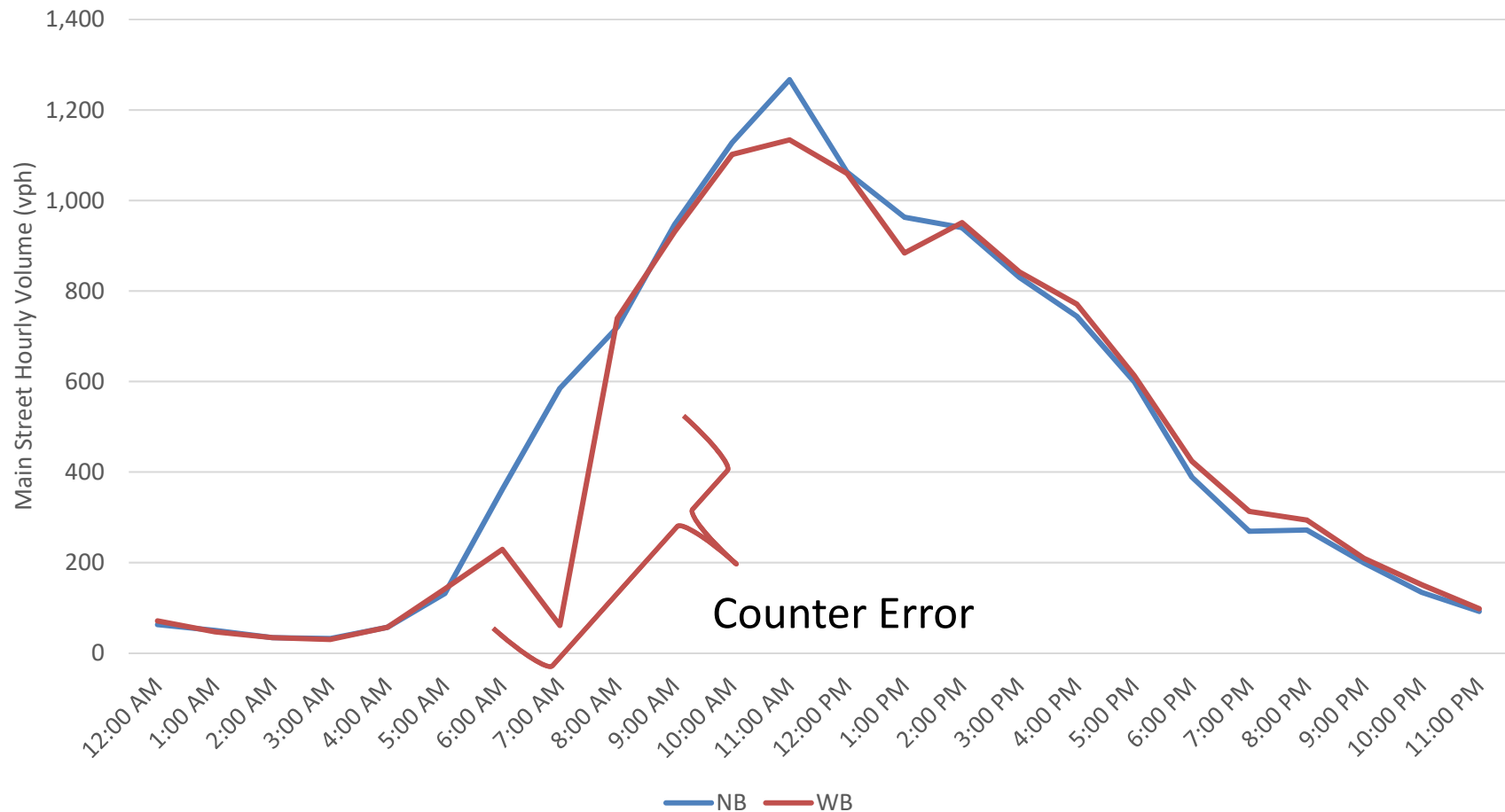


Saturday Site 1 (Main Street s/o Evans) Northbound

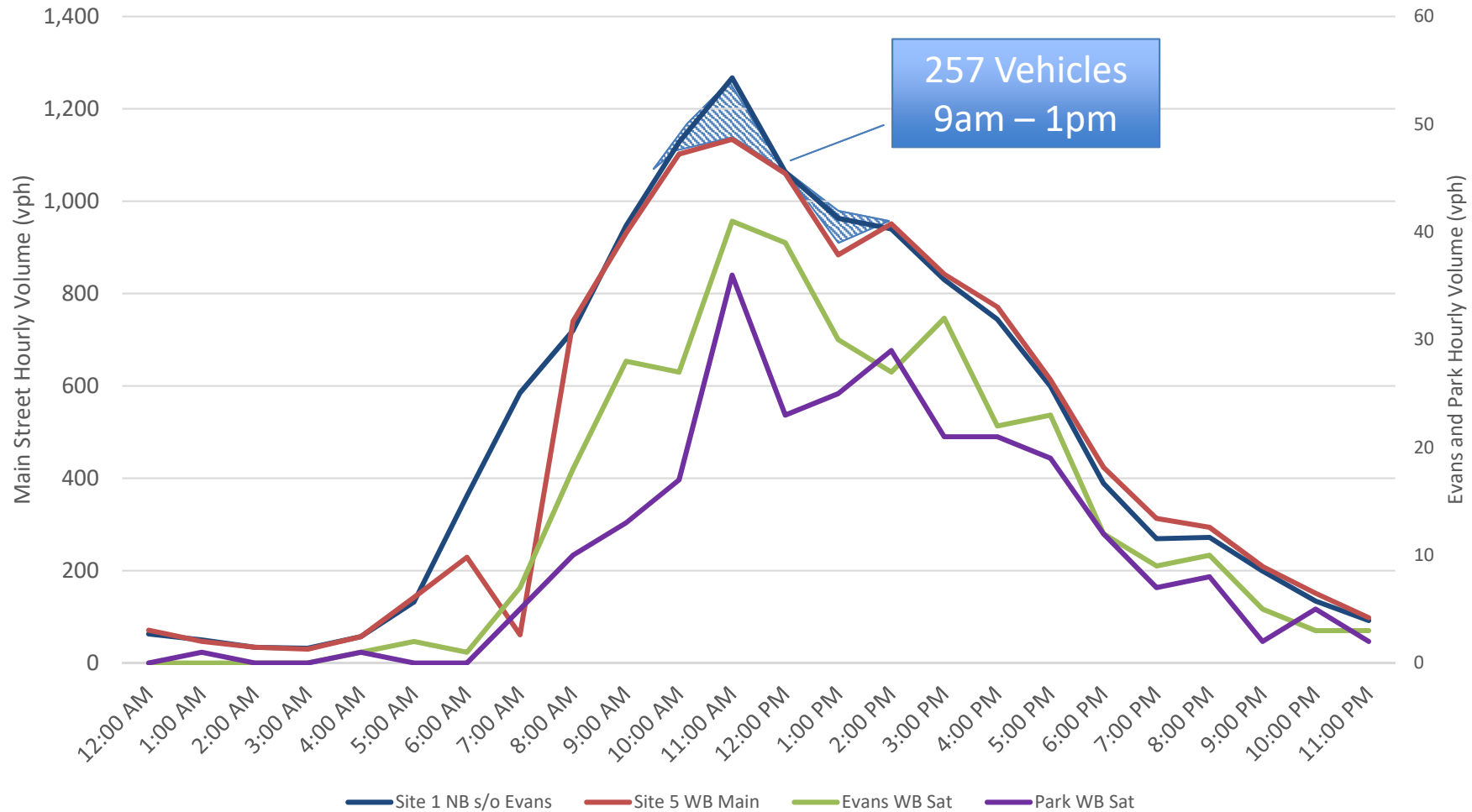


Cut-Through

Northbound Main Street (Site 1) to Westbound Main Street (Site 5) Saturday



Cut through implications



*May indicate “cut-through” traffic during midday peak

Evans and Park 9 am – 1 pm Analysis

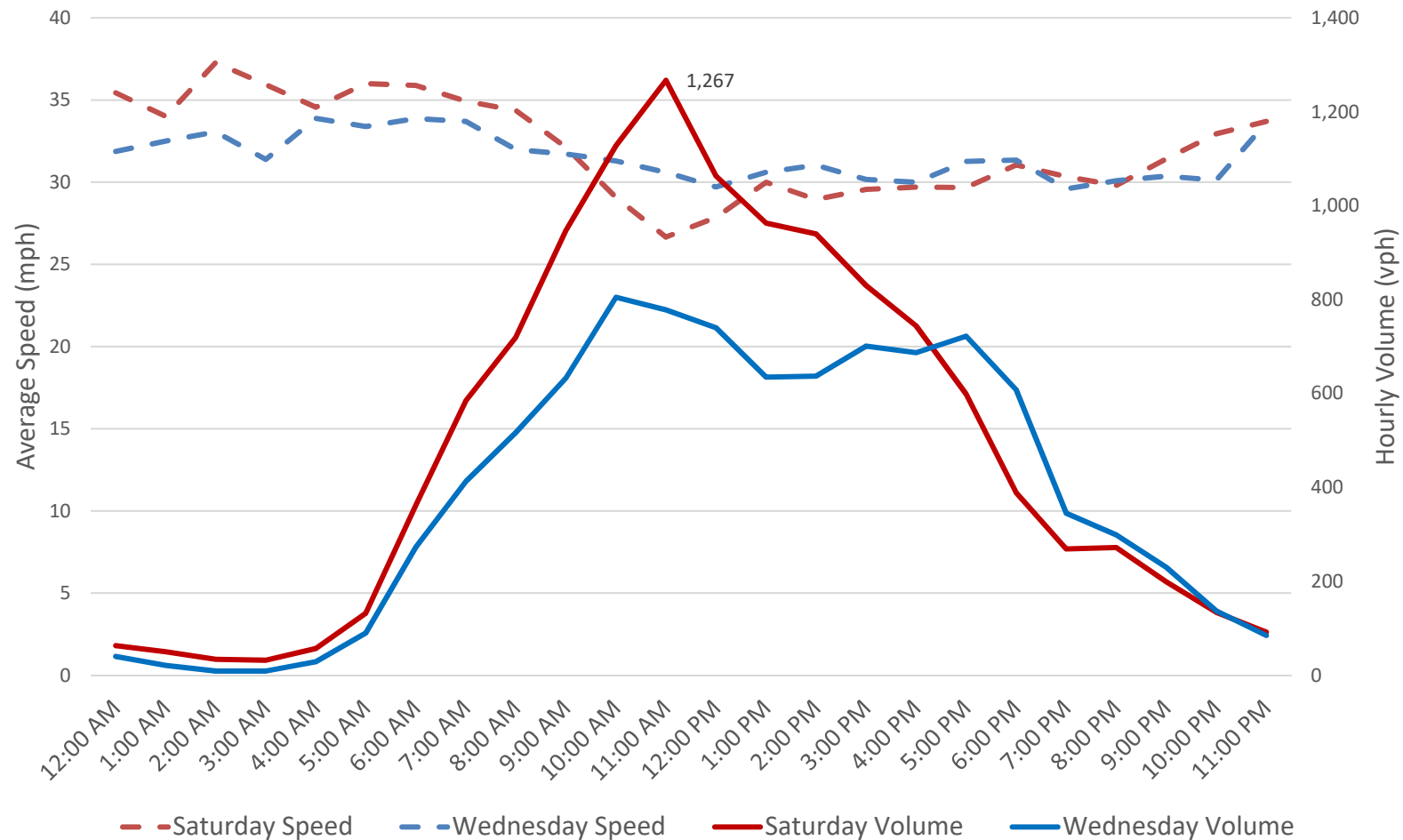
- Evans/Park WB and EB Volumes are generally within +/- 25% of each other
- On Saturday both streets experience a greater WB volume (36%/55%, Park/Evans)
- Could indicate cut-through traffic on Saturdays

Time	Tuesday				Wednesday				Thursday				Friday				Saturday				Sunday				Monday			
	7/9/2019				7/10/2019				7/11/2019				7/12/2019				7/13/2019				7/14/2019				7/15/2019			
	EB	WB	Diff	%	EB	WB	Diff	%	EB	WB	Diff	%	EB	WB	Diff	%	EB	WB	Diff	%	EB	WB	Diff	%	EB	WB	Diff	%
Park 9am-1pm	64	76	12	16%	64	62	-2	-3%	65	61	-4	-7%	69	59	-10	-17%	73	114	41	36%	81	98	17	17%	78	72	-6	-8%
Evans 9am-1pm	59	70	11	16%	69	74	5	7%	60	60	0	0%	64	84	20	24%	74	165	91	55%	83	137	54	39%	76	98	22	22%

Crosstabs

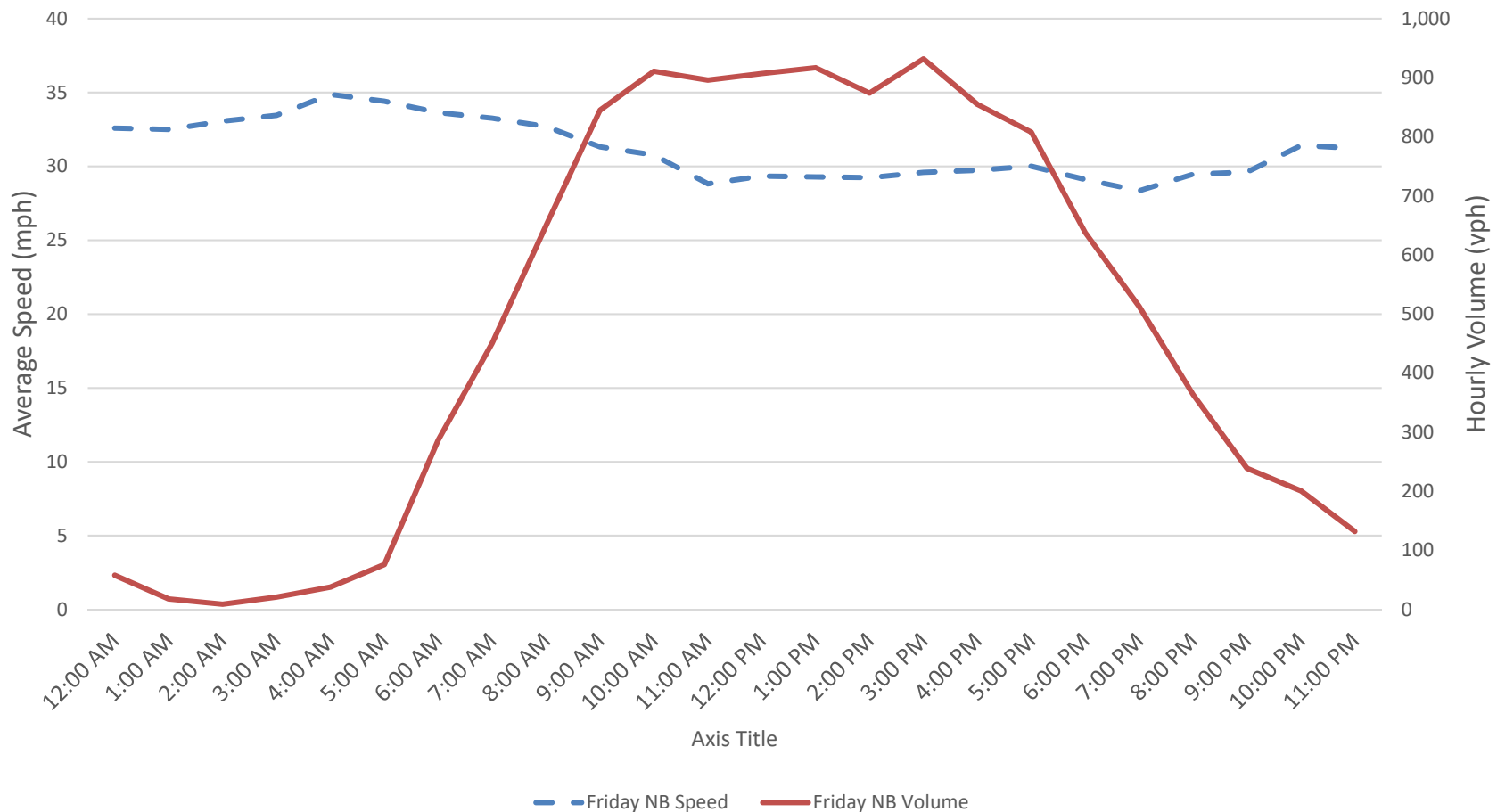
Site 1 (Main Street s/o Evans Street)

Northbound Speed vs Volume



Site 1 (Main Street s/o Evans Street)

Northbound Speed vs Volume



Recent/Upcoming Improvements

- Flashing Beacons (Done)
 - 7:30 AM – 8:30 AM
 - 2:30 PM – 3:30 PM
- RRFB and Striping (August/Early September) across 36 near Park Street



Extra

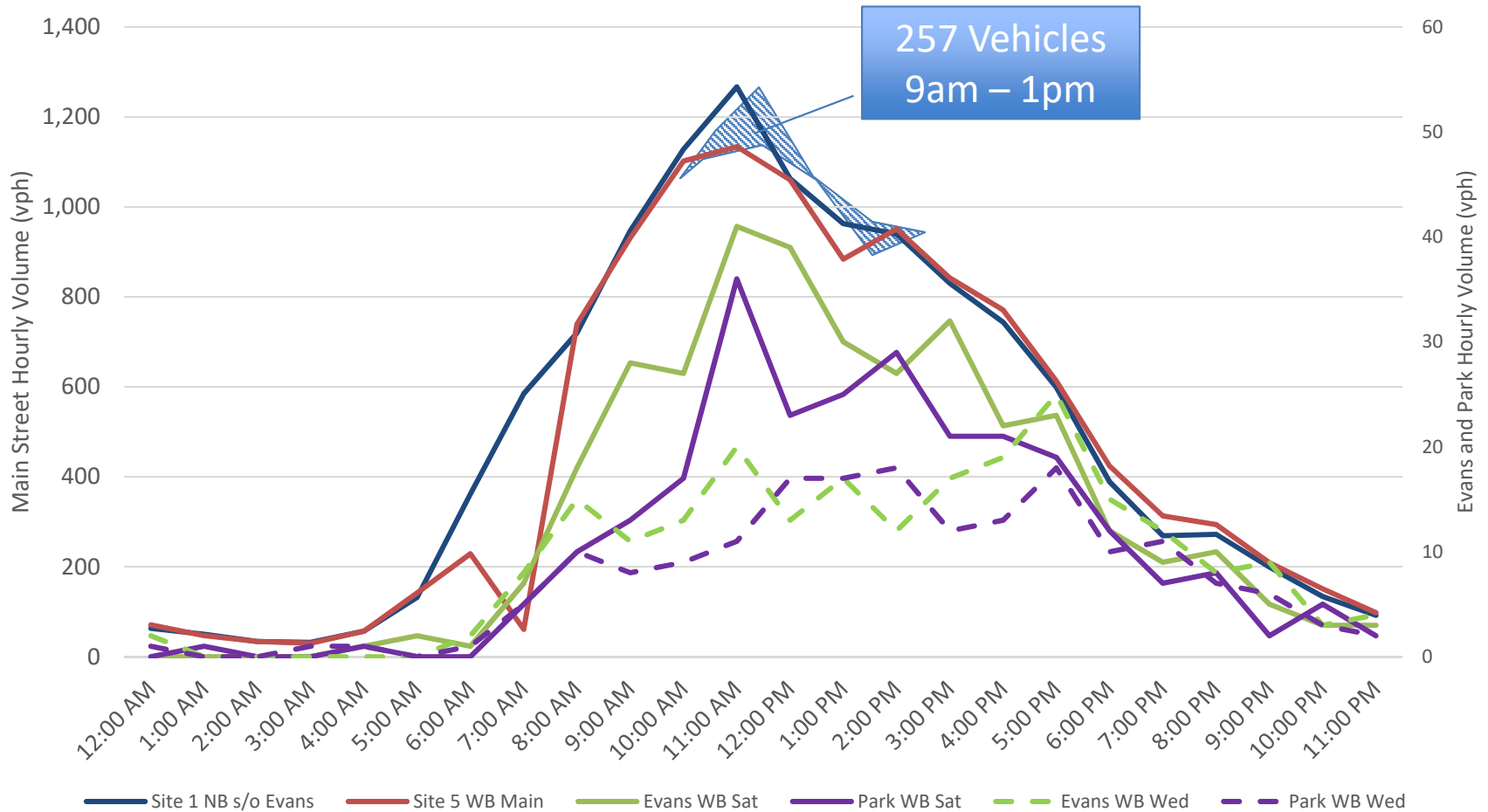
Data Summary for Collection Period

Site		Direction	HV %	85th % Speed	Posted Speed	Mid-Week	Friday Volume	Saturday Volume	Sunday Volume
					Limit (mph)	Volume Average			
1	MAIN ST S/O EVANS ST	Northbound	10%	36.80	25	9,539	11,640	11,871	11,808
		Southbound	7%	38.30	35	9,519	10,241	10,256	12,813
2	PARK ST W/O 2ND AVE	Eastbound	12%	24.60	n/a (25)	184	186	210	175
		Westbound	12%	23.20	n/a (25)	185	178	257	204
3	EVANS ST W/O 3RD AVE	Eastbound	14%	20.00	n/a (25)	178	179	205	191
		Westbound	18%	21.10	n/a (25)	221	233	340	286
4	BROADWAY W/O 3RD AVE	Eastbound	14%	34.20	25	8,854	10,059	11,939	12,685
5	MAIN ST W/O 4TH AVE	Westbound	7%	24.40	25	8,225	10,299	11,188	9,537

Data Collection Issues

- Site 1 (Main Street s/o Evans Street): Car parked on tube
 - Monday 7/15 from 11 am – 12 pm
- Site 4 (Broadway w/o 3rd Avenue): Tubes came up (large truck braking or street sweeper) – Monday 7/15 at 5pm
- Site 5 (Main Street w/o 4th Avenue): Parking on both sides, cars can park on tubes
 - 2-4pm Wednesday 7/10
 - 6:45am-7:45am Saturday 7/13
 - 11am-12pm Sunday 7/14

Cut through implications (cont.)



*May indicate "cut-through" traffic during midday peak