



Apple Valley Tanker Spill Lyons, Colorado

Presented by

Captain John Hahn, Colorado State Patrol

Joyel Dhieux, US Environmental Protection Agency

Melynda May, Colorado Parks and Wildlife

Scott Coulson, Boulder County Public Health





Accident Scene





Accident Scene



Apple Valley Tanker Spill – May 2021



Apple Valley Tanker Spill

- Spill occurred at noon on April 27, 2021
- \pm 1,000 to 1,600 gallons of gasoline spilled into drainage that leads to North St. Vrain Creek
- Significant fish kill downstream

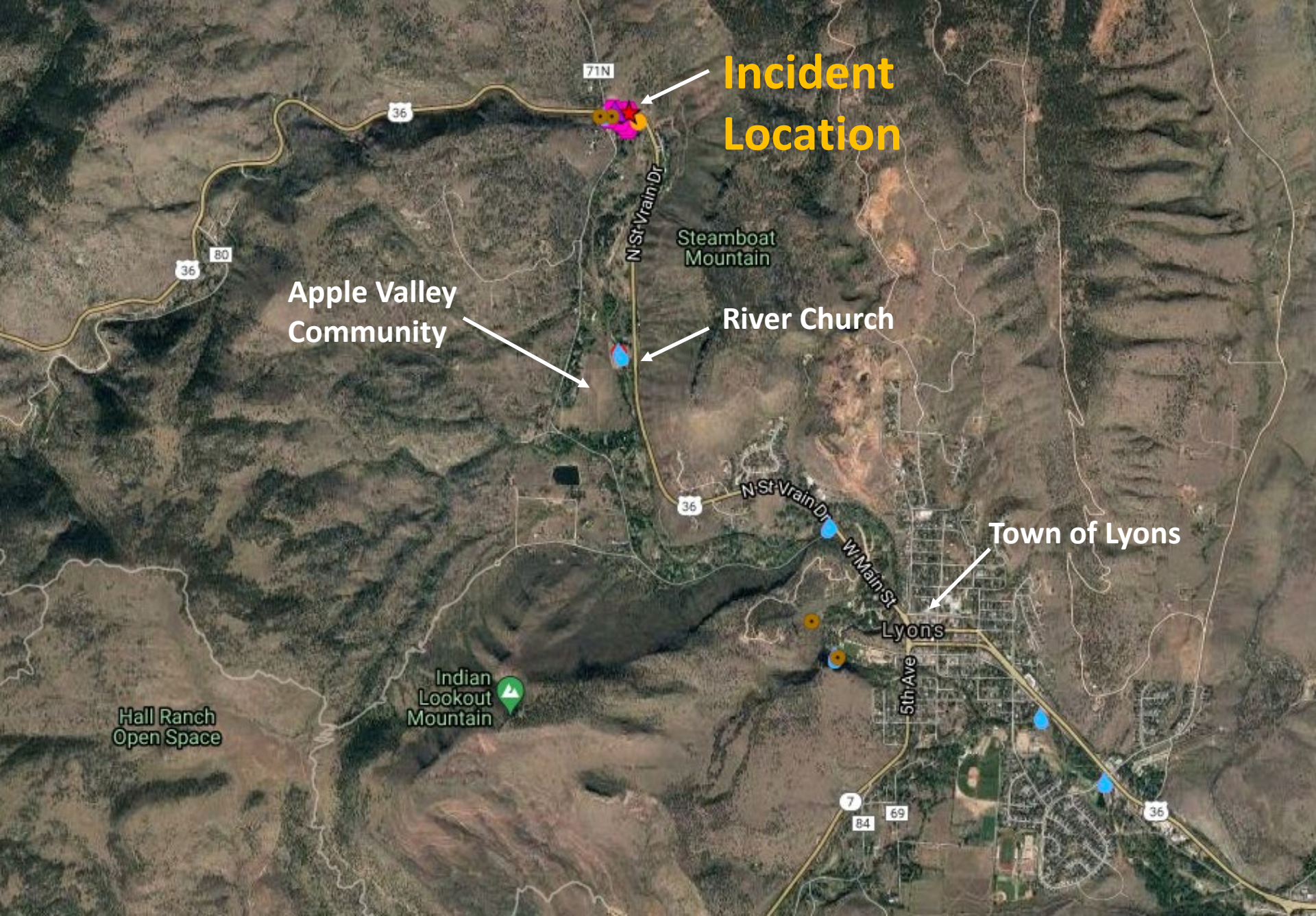


Federal, State and Local Agencies Responded



- Lyons and Hygiene Fire Depts.
- Colorado State Patrol (CSP)
- Boulder County Haz Mat
- CDOT
- Boulder County Roads
- Boulder County Public Health
- Town of Lyons
- USEPA Region 8
- Colorado Parks and Wildlife
- Colorado Department of Public Health and Environment
- Boulder County Open Space
- Boulder County Sheriff





**Incident
Location**

**Apple Valley
Community**

River Church

Steamboat
Mountain

Town of Lyons

Lyons

Hall Ranch
Open Space

Indian
Lookout
Mountain



Initial Response



Apple Valley Tanker Spill – May 2021



Initial Response



Apple Valley Tanker Spill – May 2021



Initial Response



Apple Valley Tanker Spill – May 2021



Water Quality Impacts

- EPA collected water samples from North St. Vrain Creek on April 27, and again on the 28th
- We sampled for benzene, toluene, ethylbenzene, xylene (BTEX) and gasoline-range organics (GRO)



Sampling Locations





Water Quality Impacts

- BTEX sample results were all below drinking water standards
- GRO was detected on April 27, but not the 28th
- Data suggest the pulse of gasoline dispersed quickly





Sediment Impacts

- EPA collected sediment samples on April 28th
- Sediment samples were analyzed for BTEX and GRO
- Results were at background levels and below EPA's risk-screening levels





Site Work

- Insurance company hired contractors to immediately begin removal of contaminated soils
- CSP and EPA oversaw work
- Lyons Fire Protection District provided Fire Support





CSP Oversight of Soil Removal

- Contaminated soils adjacent to Hwy 36 were excavated
- CSP screened soils for total petroleum hydrocarbons (TPH)



Contaminated Soils Transported for Disposal





Culvert Cleaned



Containment Boom Placed Below Culvert





Next Steps

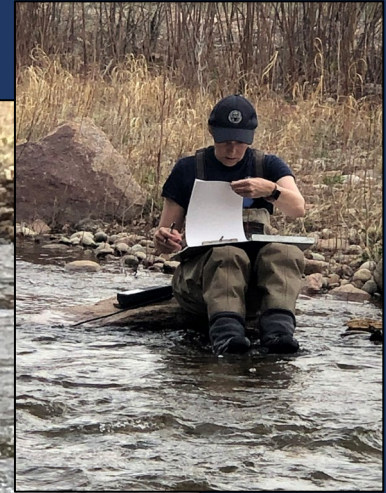
- Site will be re-graded and restored per CDOT and Boulder County Open Space requirements
- Natural Resource Damage Assessment completed by Colorado Parks and Wildlife





Colorado Parks and Wildlife

- CPW conducted assessment of impacts to the North St Vrain Creek
- lyonsfishinfo@state.co.us



Stormwater Quality Protection Program

Apple Valley Tanker Rollover



Public Meeting, May 20, 2021



Why protect water quality?



Public Health – Illegal Discharge



Detecting and Eliminating Illegal Discharges



Boulder County Public Health **detects and eliminates pollution**  from entering Boulder County storm drains as part of the Boulder County **Illegal Discharge Ordinance** , our local clean water act.

Residents and visitors can help by reporting pollution entering storm drains and waterways.

Things to look for include:

- An unusual color of the water
- An unusual or foul odor
- Suds or puddles when there has not been recent precipitation
- Any unusual-looking substance leaving the storm drain
- Illegal dumping of waste near storm drains (e.g., household chemicals, automobile fluids)
- A large number of dead or dying animals including fish, crayfish, insects, waterfowl or other animals near a waterbody

Report A Concern 

To verify if a concern is in unincorporated Boulder County, use the **Property Search tool**  to determine the location before submitting your report. See **Stormwater Quality Reporting Numbers**  for stormwater pollution concerns in cities and towns.



<https://www.bouldercounty.org/environment/water/stormwater-quality-protection/>



Questions?



For additional information, visit the Apple Valley Emergency Response website at:

<https://response.epa.gov/AppleValley>

