

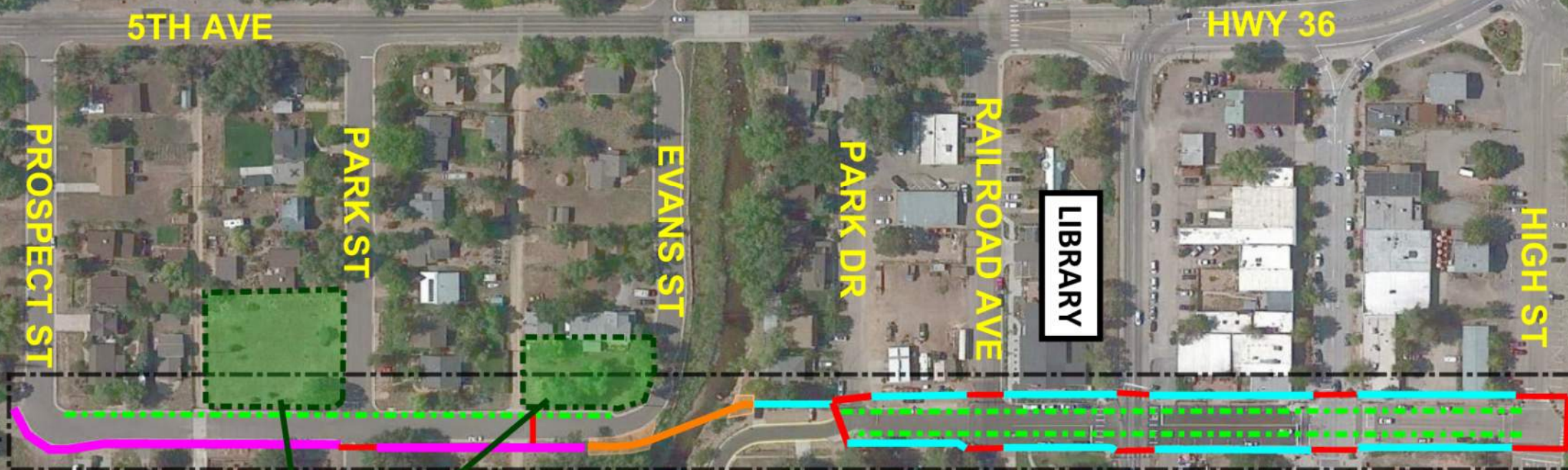
# 4<sup>th</sup> Avenue Pedestrian Bridge

A Colorado Safe Routes to  
School Project

---



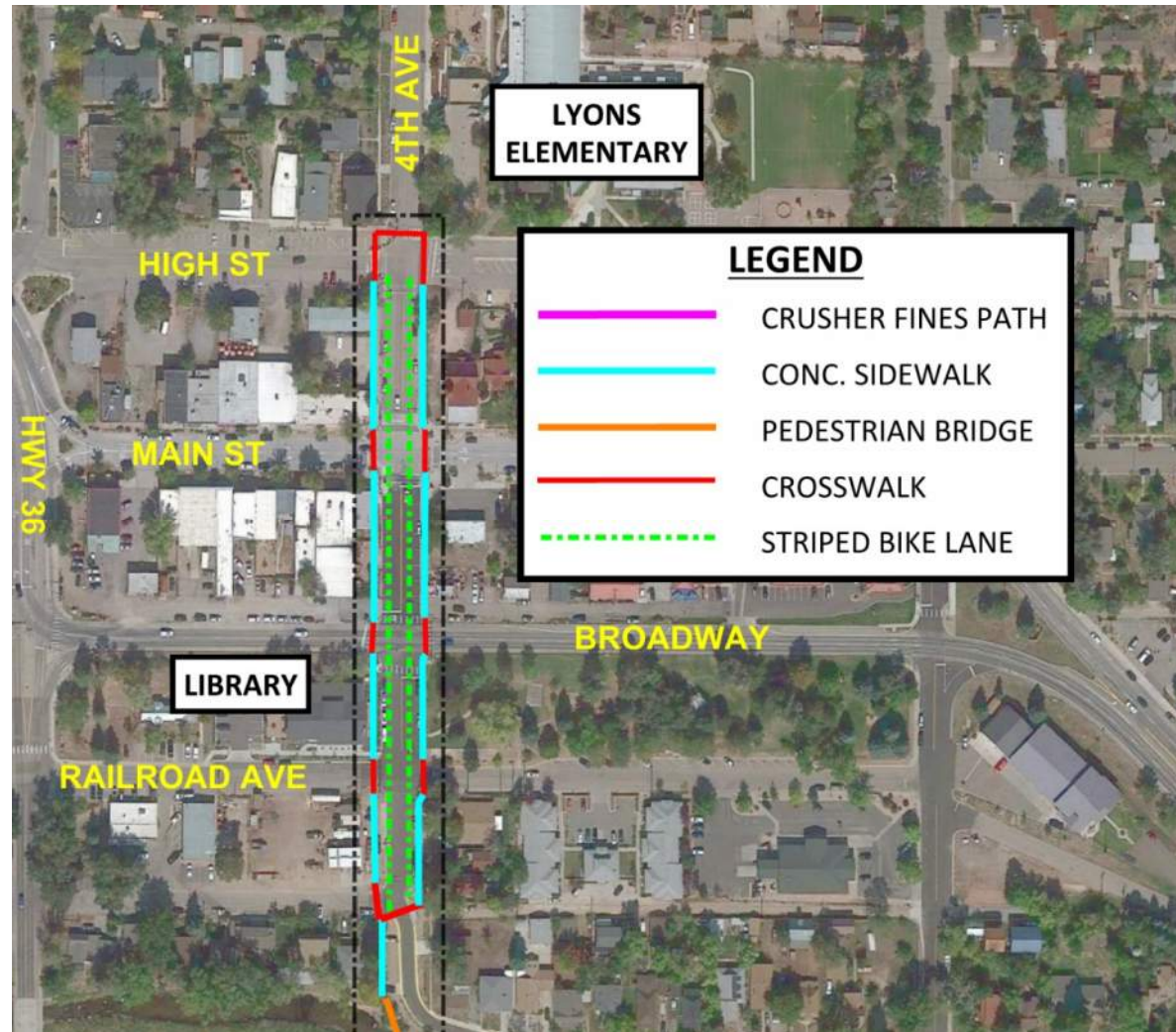
**TOWN OF LYONS**  
**4TH AVE PED BRIDGE AND PED IMPROVEMENTS**



**LEGEND**

- CRUSHER FINES PATH
- CONC. SIDEWALK
- PEDESTRIAN BRIDGE
- CROSSWALK
- STRIPED BIKE LANE



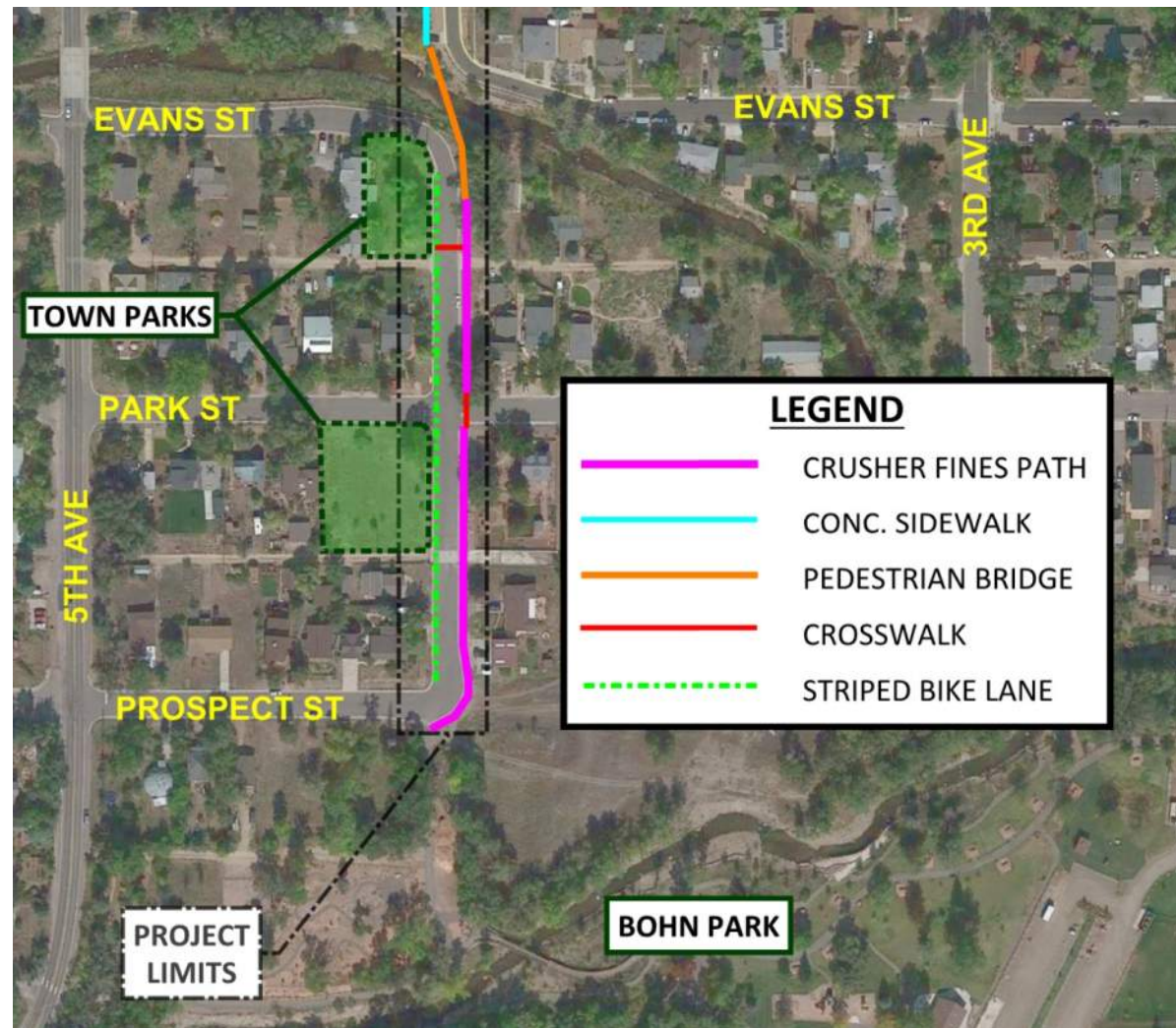


Proposed improvements north of St. Vrain Creek

# Project Goals

---

- Encourage children to safely walk and bike to school
- Reduce risk of injury to all pedestrians
- Provide connectivity between the Town's public schools and different neighborhoods, especially parts of town separated by St. Vrain Creek



Proposed improvements south of St. Vrain Creek

# Project Goals

- Encourage children to safely walk and bike to school
- Reduce risk of injury to all pedestrians
- Provide connectivity between the Town's public schools and different neighborhoods, especially parts of town separated by St. Vrain Creek



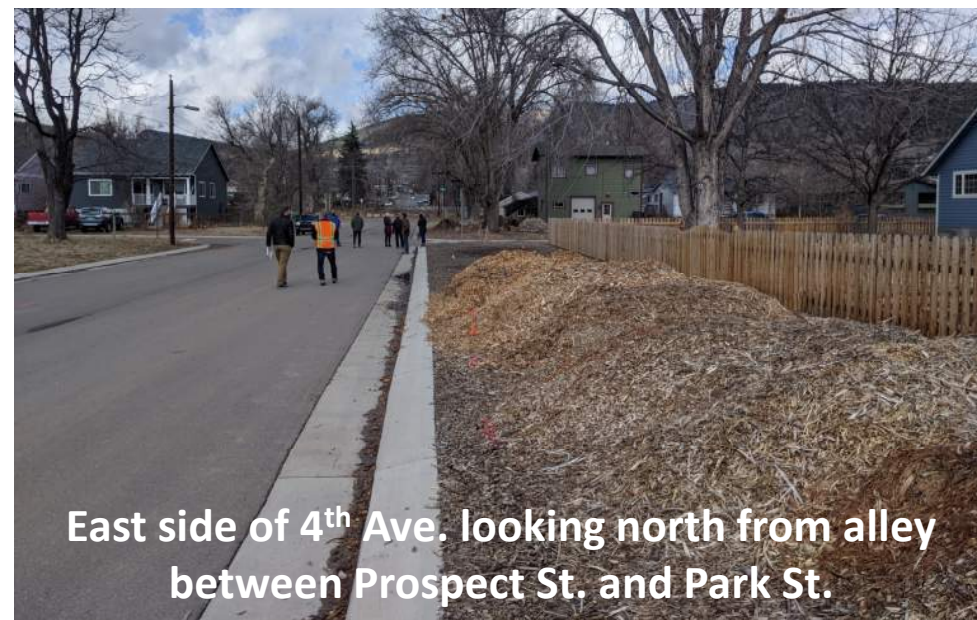
# Current Conditions Along 4th Ave



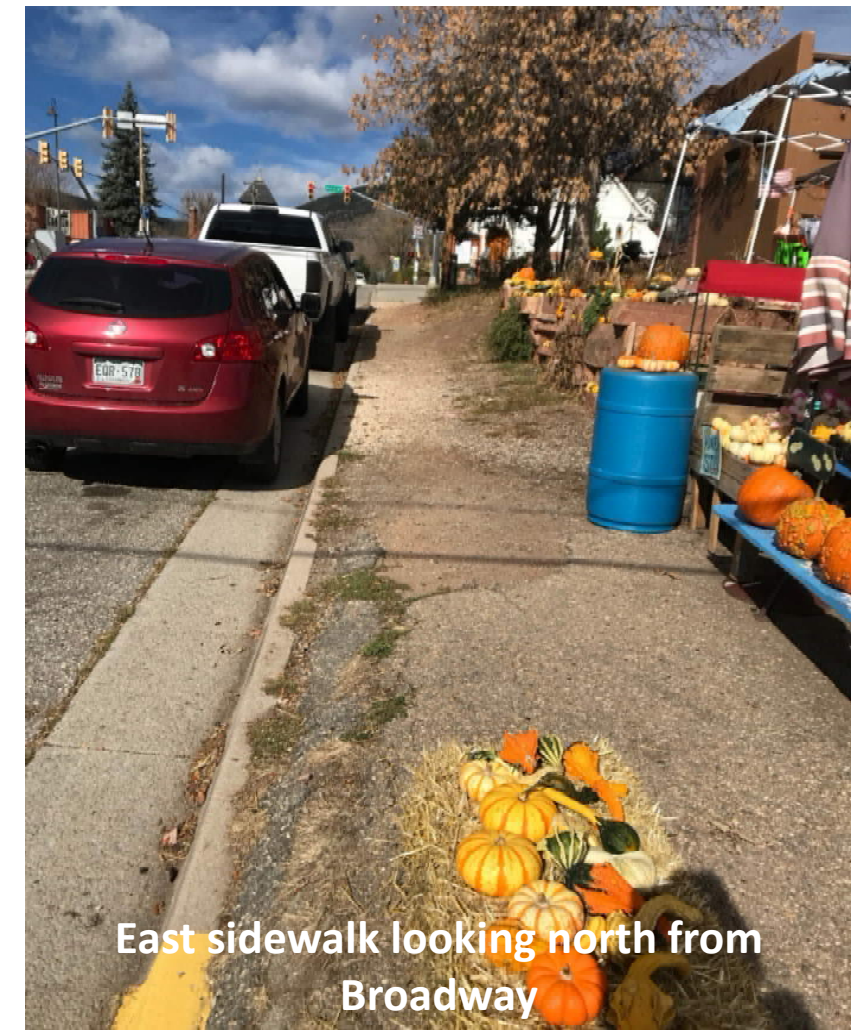
4<sup>th</sup> Ave. Looking north from Broadway



Intersection of 4<sup>th</sup> Ave and Park Dr.  
looking north



East side of 4<sup>th</sup> Ave. looking north from alley  
between Prospect St. and Park St.



East sidewalk looking north from  
Broadway



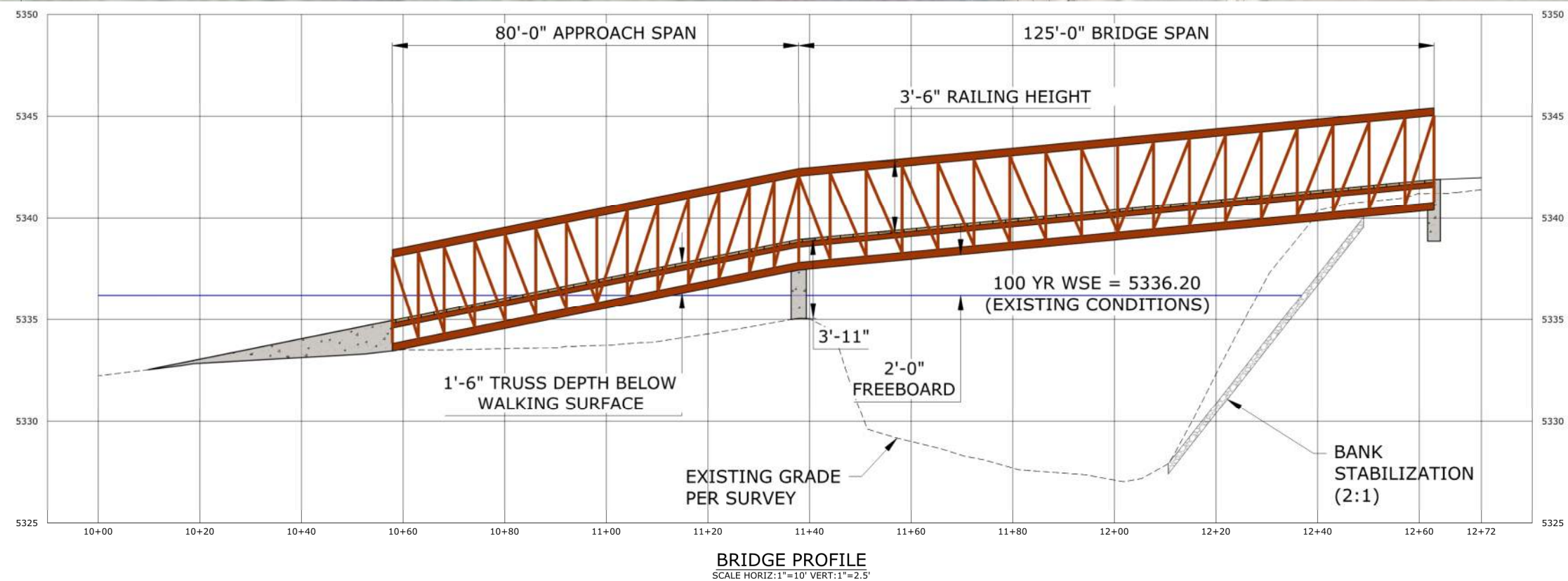
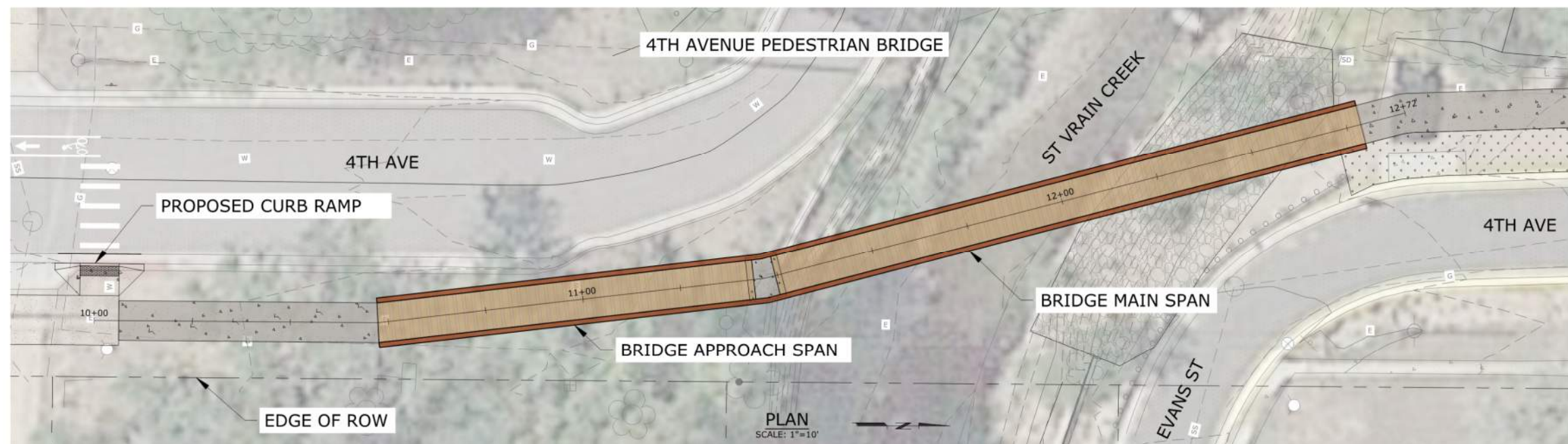
# Prefabricated Pedestrian Bridge

---

- 120' long, 8' wide bridge, 4-foot high horizontal railing
- Installed onto reinforced concrete abutments secured with flood anchors
- Concrete decking poured after installation











# South-Side Approach Span (facing East)

Concrete landings for ADA  
compliance



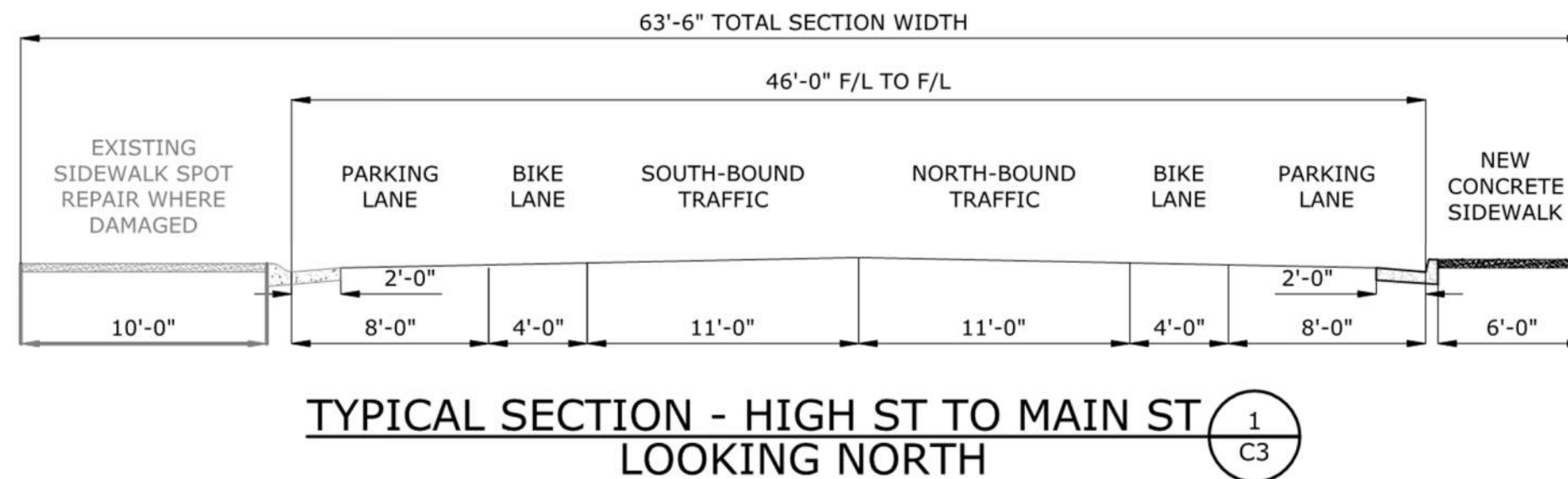
## Notes:

1. East to west alignment required to accommodate ADA compliant approaches and ramp
2. Approach span design to match color and aesthetics of main span



# Section 1: High St to Main St

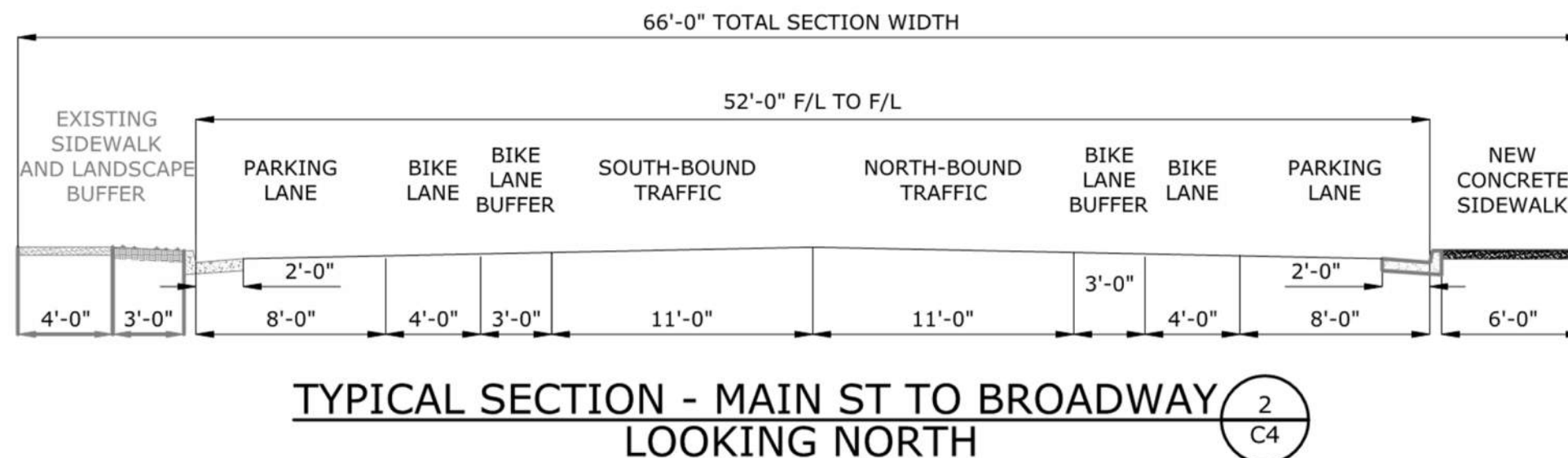
- Spot repair of damaged sections of sidewalk and C/G on W side of 4<sup>th</sup> Ave.
- Replace existing sidewalk on E side of 4<sup>th</sup> Ave to maintain uniform roadway width
- Dedicated parking aisle and bike lane on both sides of 4<sup>th</sup> Ave





# Section 2: Main St to Broadway

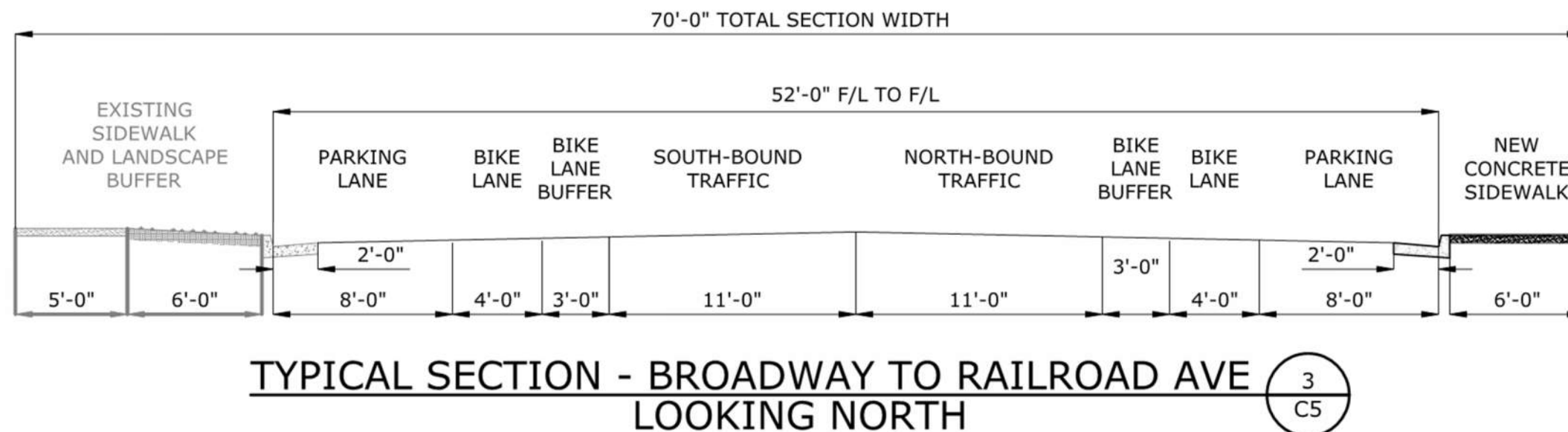
- Existing detached sidewalk and C/G on W side of 4<sup>th</sup> Ave to remain.
- Construct new sidewalk and boulder retaining wall on southern portion of E side of 4<sup>th</sup> Ave.
- Dedicated parking aisle and bike lane on both sides of 4<sup>th</sup> Ave
- Safety separation between bike and driving lanes on both sides





# Section 3: Broadway to Railroad Ave

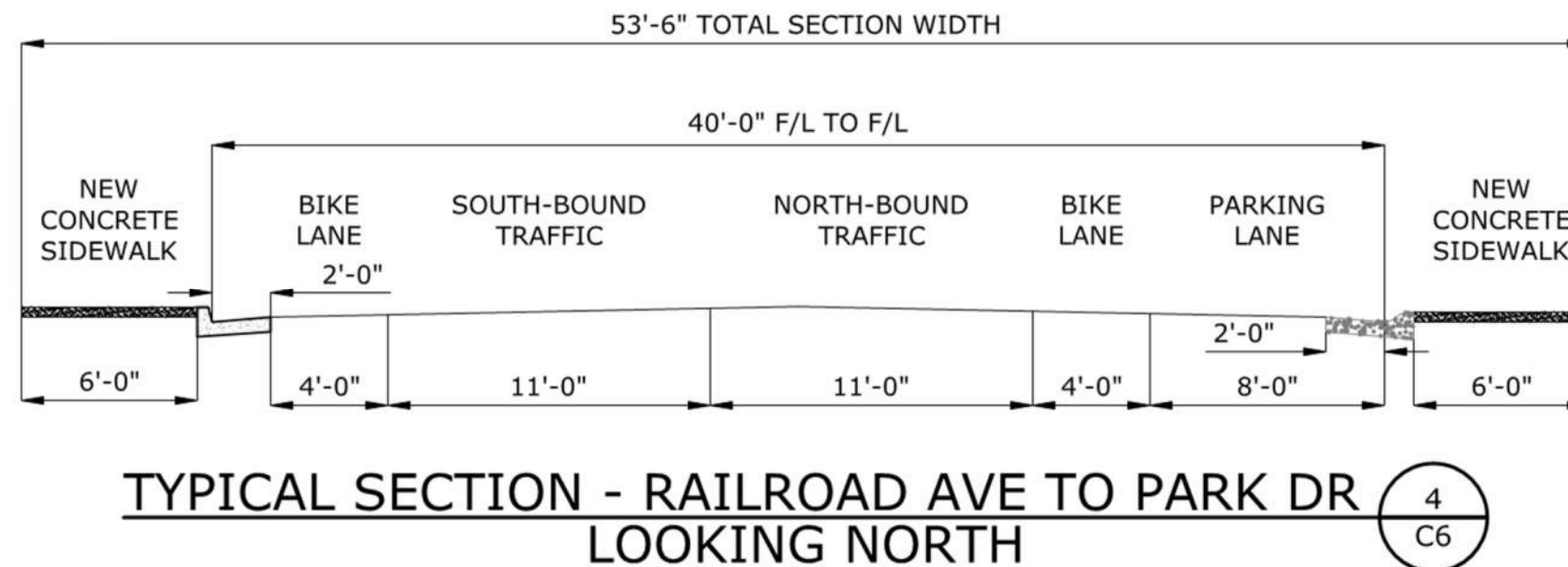
- Existing detached sidewalk and C/G on W side of 4<sup>th</sup> Ave to remain.
- Construct new sidewalk on E side of 4<sup>th</sup> Ave.
- Dedicated parking aisle and bike lane on both sides of 4<sup>th</sup> Ave
- Safety separation between bike and driving lanes on both sides





# Section 4: Railroad Ave to Park Dr

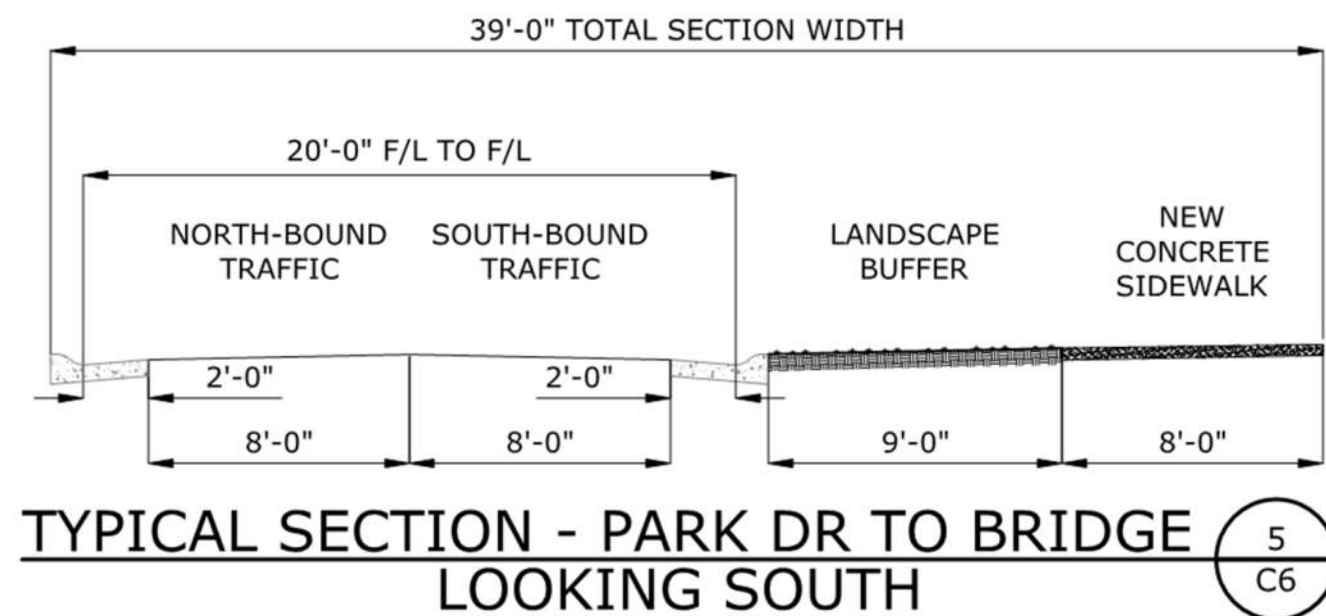
- Construct new sidewalk on both sides of 4<sup>th</sup> Ave.
- Dedicated parking aisle on E side of 4<sup>th</sup> Ave.
- Bike lanes on both sides of 4<sup>th</sup> Ave





# Section 5: Park Dr to Bridge

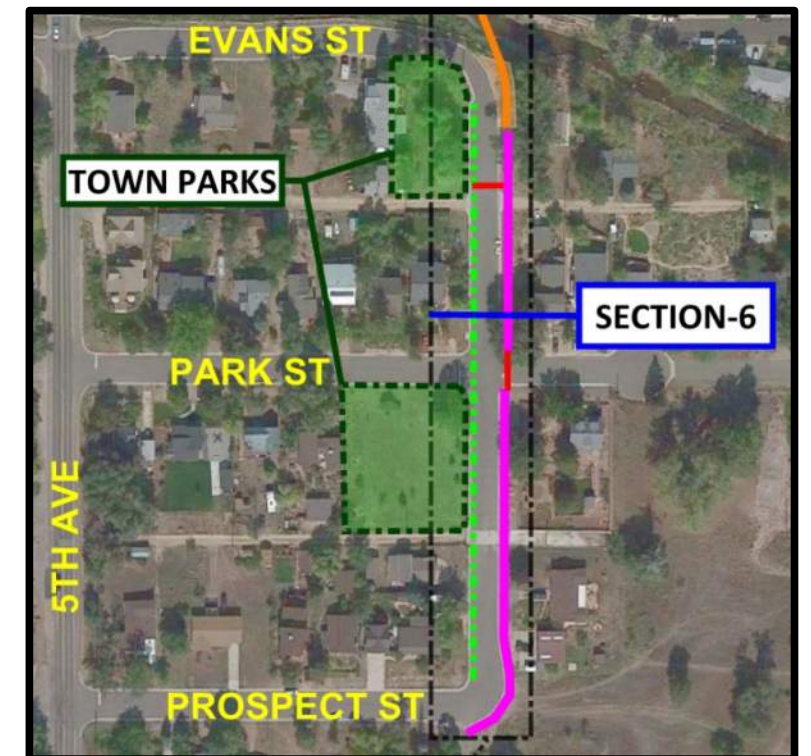
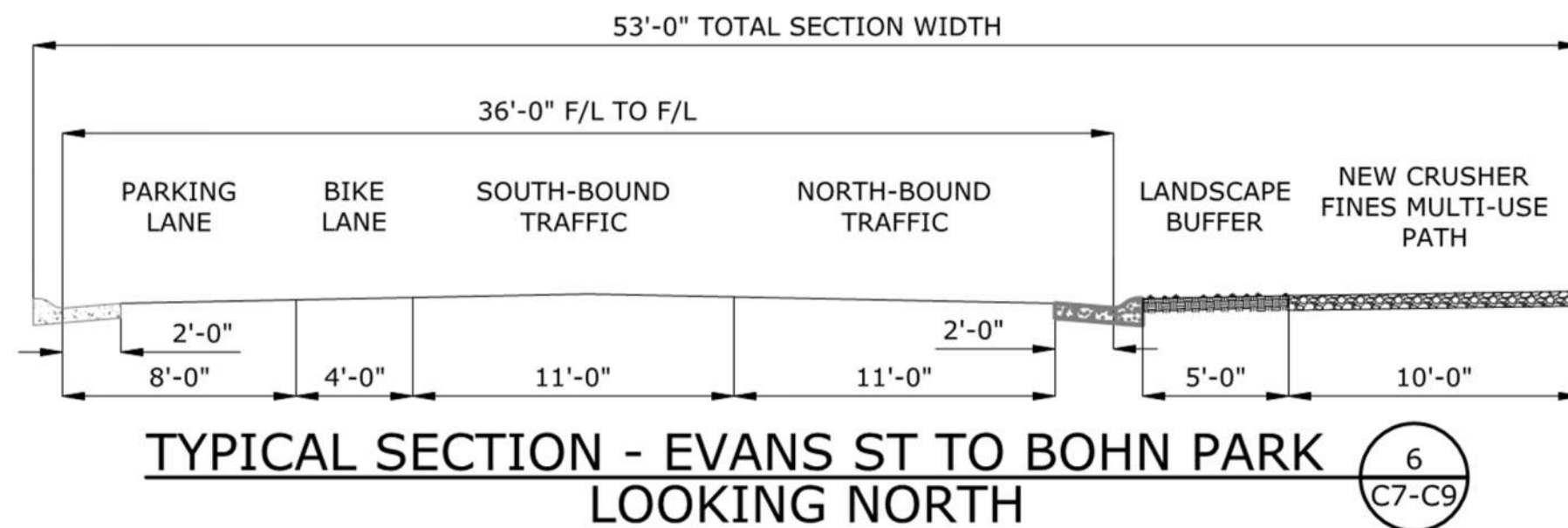
- 8 ft concrete sidewalk on W side of 4<sup>th</sup> Ave to match width of bridge
- Crosswalk at Park Dr to provide connectivity to northbound SRTS pathway
- No proposed changes to existing roadway





# Section 6: Evans St to Bohn Park south of St. Vrain Creek

- Dedicated parking aisle and bike lane on W side of 4<sup>th</sup> Ave
- New 10 ft wide crusher fines multi-use pathway on E side of 4<sup>th</sup> Ave
- Crosswalks to provide connectivity between bike land and multi-use pathway





# Section 6: East Side Alignment South of St. Vrain Creek

---

- Bridge landing is located on east side
- Additional clearance between road and trees
- Reduced utility conflicts
- Less cross traffic across path
- Reduced number of crosswalks for path







Artistic rendering of pedestrian bridge