

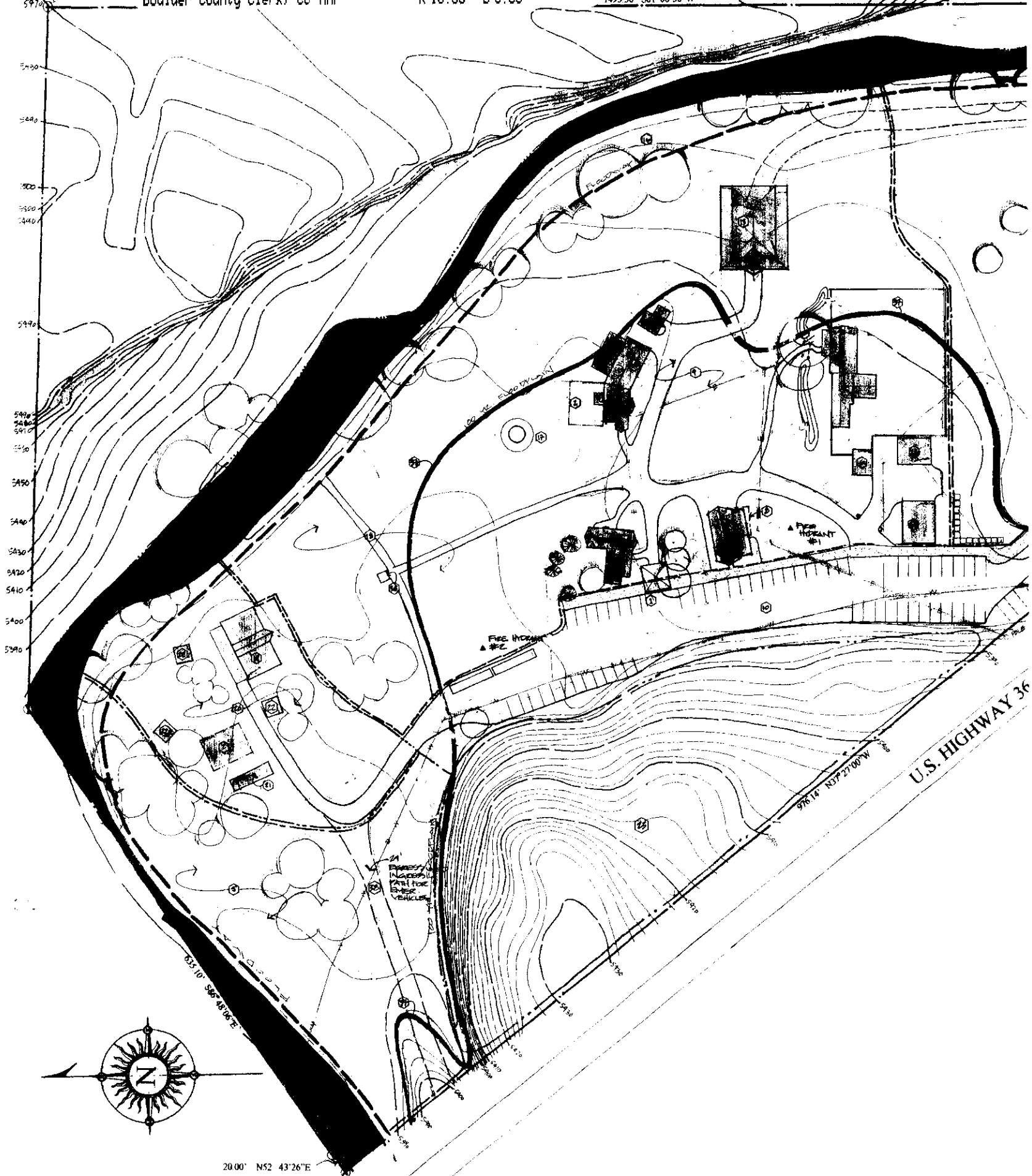


5972' NL CORNER SE1/4 N

Boulder County Clerk, CO MAP

1493.36' S01 06'30"W

5144'  
5143'  
5142'  
5141'  
5140'  
5139'  
5138'



20.00' N52 43'26"E



### PLANET BLUEGRASS SITE PLAN

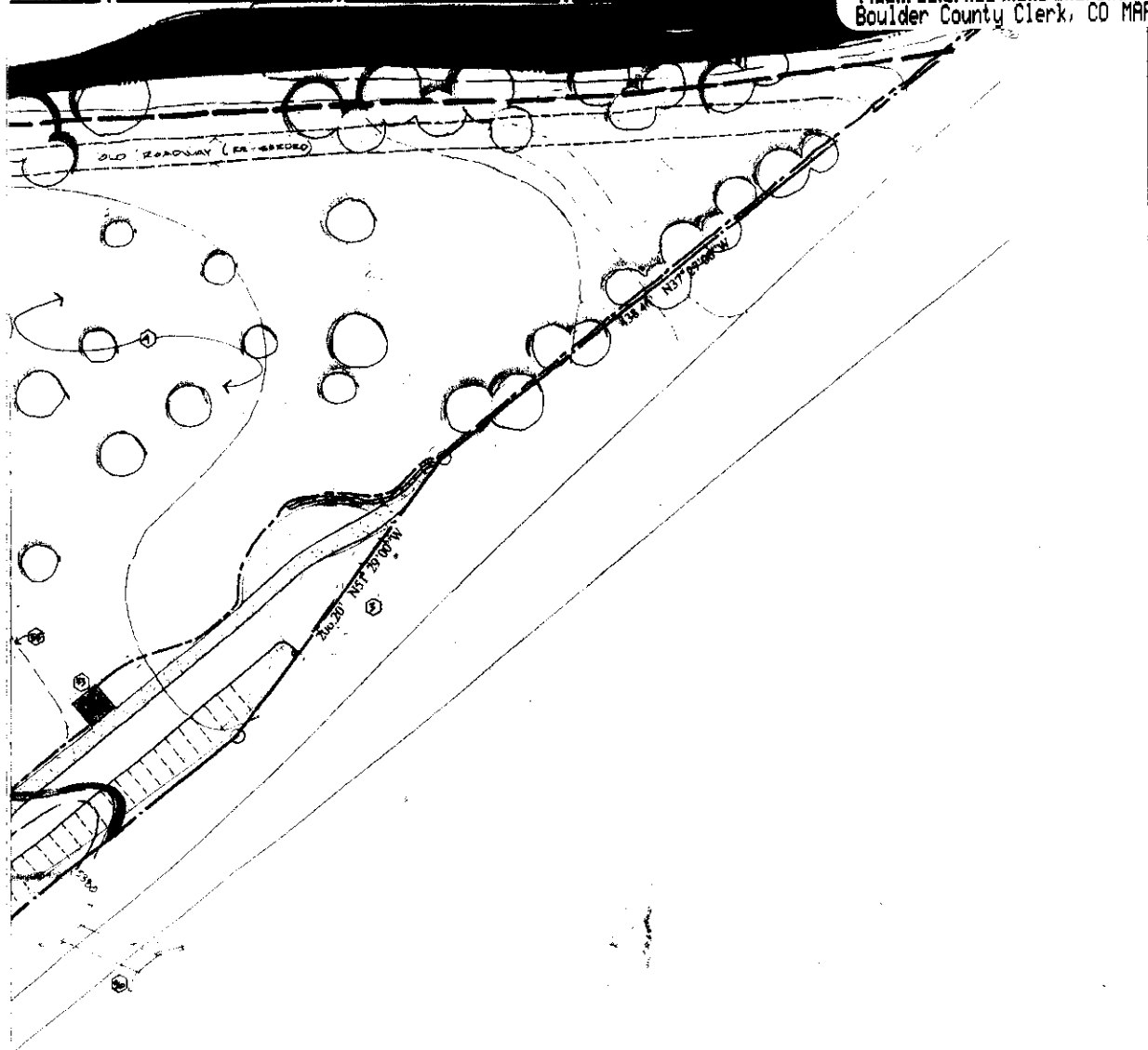
SCALE: 1"=50'-0"

Return:  
Town of Lyons  
P.O. Box 49  
Lyons, CO  
80540

1/2



Boulder County Clerk, CO MAP



TIMOTHY KYER  
DESIGN COMPLETE  
2344 Spruce Street  
Suite C  
Boulder, CO 80302  
303.449.2369 voice  
444.6636 fax  
descomplete@msn.com

PLANET BLUEGRASS  
500 WEST MAIN STREET / LYONS, COLORADO 80540 / 303.449.6007

APRIL 9, 1998 REVISED 2-2-98

SITE

**LEGAL DESCRIPTION**

A tract of land located in Section 18, 12N, R79W of the 6<sup>th</sup> PM, Town of Lyons, Boulder, Colorado, said tract more particularly described as follows:  
Beginning at the intersection of the southeast corner of the north St. Vrain Creek and intersection of the southeast corner of the paved roadway of U.S. Highway 36, and intersection nearest to the center of Section 18, thence northwesterly along the southeast corner of the north St. Vrain Creek, thence northerly, then westerly, then northerly along the southeast corner of the north St. Vrain Creek to the Point of Beginning, including therein any portion of the preceding not contained within the legal description contained in a Deed dated July 11, 1995 and recorded July 16, 1995 with the Boulder County, Colorado Clerk and Recorder in File No. 1414, recording No. 21052485.  
Area = 17.75 Acres, approximately

Approved by the Public Works Dept. of the Town of Lyons  
the 17<sup>th</sup> day of May 1998

Approved by the Planning Commission of the Town of Lyons  
the 17<sup>th</sup> day of May 1998

Approved by the Board of Trustees of the Town of Lyons  
the 17<sup>th</sup> day of May 1998

ATTEST  
Town Clerk

STATE OF COLORADO )  
COUNTY OF BOULDER )

I hereby certify that this instrument was filed for record in my office on the  
day of 1998 in Book No. Reception No.  
1499

Clerk & Recorder by Deputy