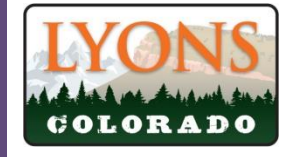
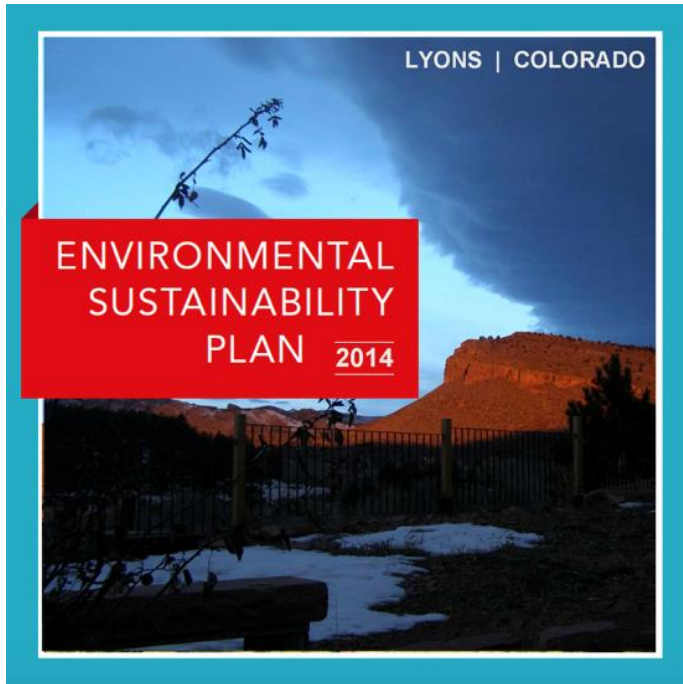


# RESIDENTIAL HAULING

Board of Trustees Meeting (10/21/2019)



# SUSTAINABLE PRIORITIES



## **Waste Goals:**

- Reduce the amount of solid waste sent to landfills
- Support recycling and composting programs
- Strive towards zero waste and manage resources responsibly and effectively

# SINGLE HAULER PAYT - BENEFITS & CHALLENGES

## Benefits

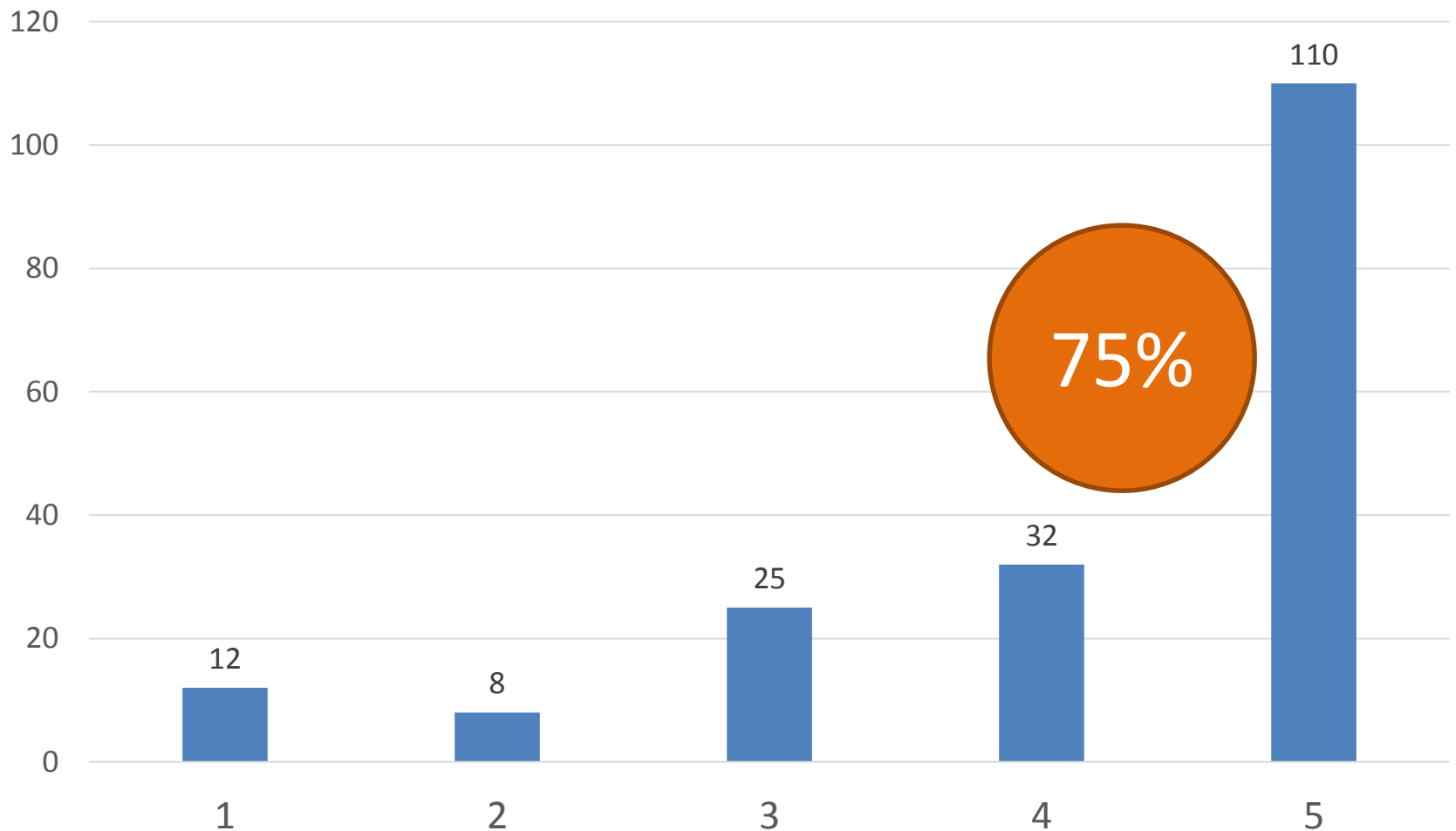
- Increases services and diversion
- Will capture households who don't subscribe to trash services
- Ability to offer compost/yard waste collection
- Cost to subscribers will go down due to economies of scale
- More convenient/ reduction of trucks

## Challenges

- Loss of personal choice
- Town of Lyons administration regarding billing

# 2018 ECO-CYCLE SURVEY

On a scale of 1-5, how would you feel about the town negotiating with a single hauling company to provide curbside trash, recycling, and composting services at a reduced cost? (1 = strongly oppose, 5 = strongly support)



# COST COMPARISONS



Cost by Service		Western	One-way
Trash (per RFP increase of 100% increment)	32 gallon	\$ 13.00	\$21.20
	64 gallon	\$ 26.00	\$ 42.40
	96 gallon	\$ 39.00	\$ 63.60
	**Pre-paid bags	\$ 6.70 (trash only)	\$7.00 (trash only)
Recycle	96 gallon	Included (in above)	Included (in above)
Compost	32 gallon	\$5.00	\$2.40
<b>PAYT Monthly Cost</b> (with 96 gallon recycling, 32 gallon compost and increase per trash size)		<b>\$18/\$31/\$44</b>	<b>\$23.60/\$44.80/\$66</b>

# OTHER NOTABLE FINDINGS



- The cost of recycling
- Composting concerns
- Bin ownership
- Bear proof concerns (trash and compost)

HOAs are included in the scope of the PAYT program

*(d) As used in this subsection (7.5), “residential waste services” means the collection and transportation of ashes, trash, waste, rubbish, garbage or industrial waste products, or any other discarded materials from sources other than industrial or commercial establishments or multifamily residences of eight or more units.*

*Colo. Rev. Stat. Ann. § 30-15-401 (West)*

# SUMMARY



## Benefits

- Increase Diversion Rates
- Increases Curbside Services for Everyone (Trash, Recycling & Compost)
- More Convenient for Residents
- Reduction of Trucks
- Average Cost to Subscribers Will Be Lower or Stay the Same
- No Upfront Cost to the Town
- All Service & Communication Done By Hauler
- Optional Bear Proof Bins Provided for Small Fee

## Challenges

- Billing Through Town Utility (needs administration)
- Highest Trash Generators Pay Slightly More
- Loss of Choice for Residents and Perceived Loss of Competition