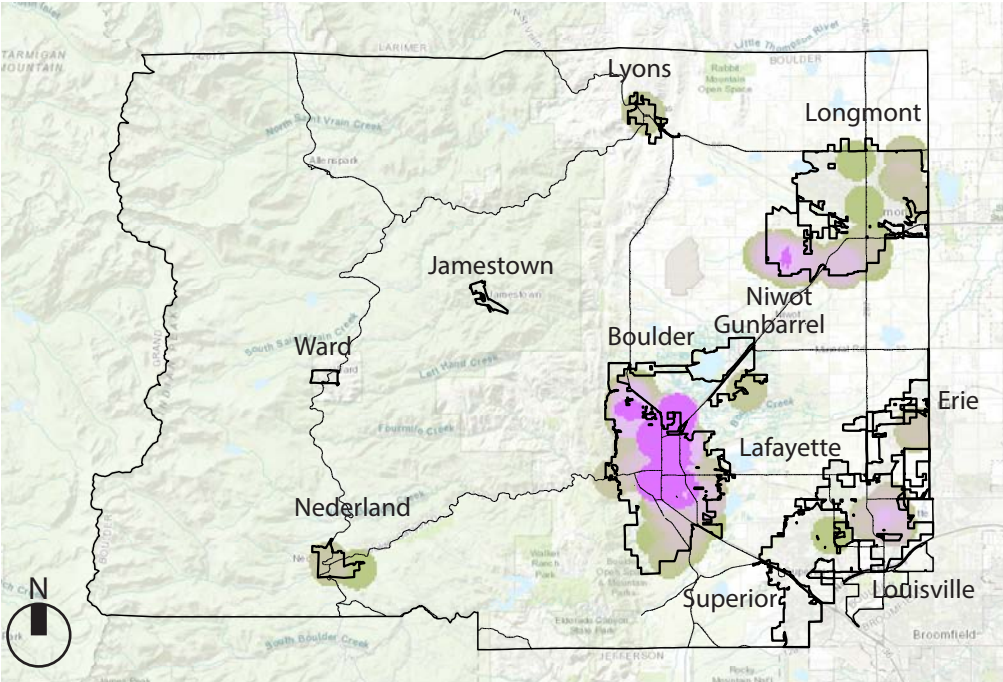


Strategies

Within each of the priority areas identified, the Boulder County Regional Housing Partnership is seeking adoption of the following strategy recommendations. This plan recognizes that a significant increase in local and regional efforts and adoption of multiple strategies and funding sources are required to gain ground in preserving affordability and price diversity in the regional housing inventory.

Current Distribution of Affordable Housing 2015



Sources: Boulder County Accessors Data
Esri, HERE, DeLorme, Intermap, increment P Corp., GEBCO, USGS, FAO, NPS, NRCAN, GeoBase, IGN, Kadaster NL, Ordnance Survey, Esri Japan, METI, Esri China (Hong Kong), swisstopo, MapmyIndia, © OpenStreetMap contributors, and the GIS User Community

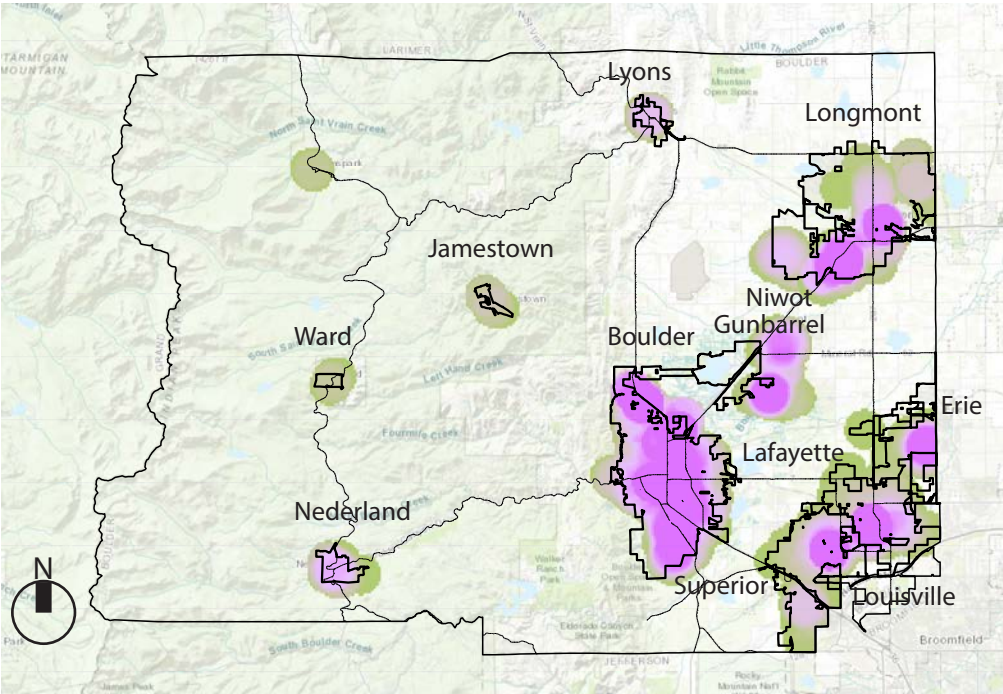
Affordable Homes



Housing Inventory 2017	
Mountains Nederland & Lyons	80 homes
Northeast Longmont	1,990 homes
Central Boulder, Gunbarrel, & Niwot	3,540 homes
Southeast Lafayette, Louisville, Superior & Erie	810 homes

Source: Municipal Administrative Staff

Possible Distribution of Affordable Housing In 2035



Affordable Homes



Housing Inventory 2035	
Mountains Nederland & Lyons	100 homes
Northeast Longmont	5,000 homes
Central Boulder, Gunbarrel, & Niwot	7,000 homes
Southeast Lafayette, Louisville, Superior & Erie	3,000 homes