

2023 Proposed Ballot Measures

County 1A: Open Space Tax Extension

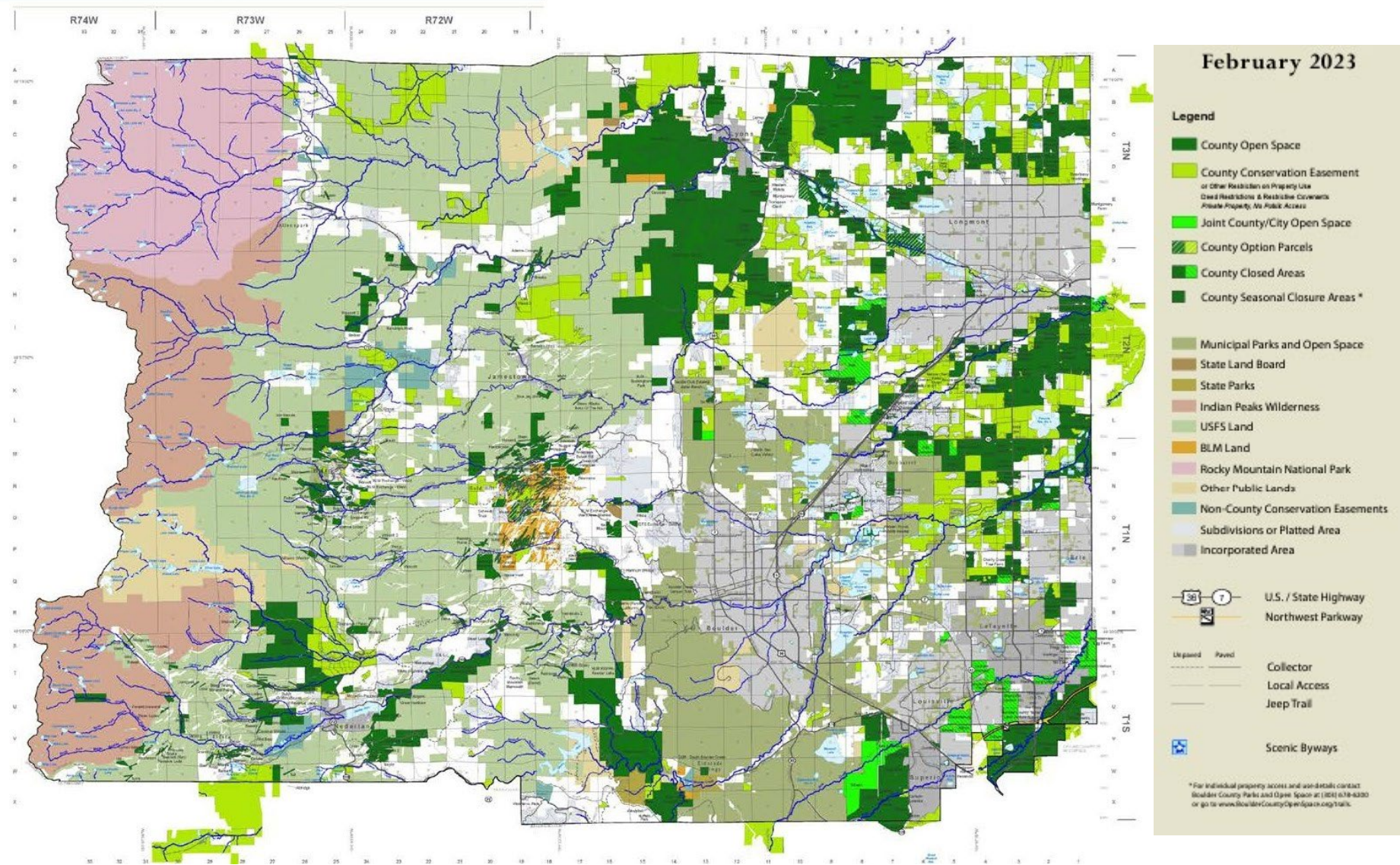


Ashley Stolzmann-Lead

Extension of .05% sales tax



Open Space in Boulder County



Open Space Tax Extension



Open Space Tax Extension

Open Space Preserves:

- Wildlife Habitat
- Passive Recreation
- Agriculture
- Urban Buffers
- Scenic Corridors

Priority Land :

- ▶ Prime wildlife habitat
- ▶ Community/Regional Trail Connections
- ▶ This sales tax will generate

Open Space Tax Extension

Maintenance Needs:

--116,000 Acres:

25,000 in Ag

30,000 forested

40,000 Conservation Easements

--120 Miles of Trail

--350 Historic Structures

--Volunteers

2500 one-time/year

250 ongoing



County 1B: Affordable Housing



**Marta Loachamin- Lead,
Annmarie Jensen-Campaign Chair**

Extension of an existing 0.185% sales tax



Affordable Housing: The Need



\$750,000

Median sale price of a home in Boulder County (Redfin).



\$2,575 per month

Median price for a two-bedroom rental in Boulder County not including utilities (Zillow).



37%

of people living in Boulder County are renting ([U.S. Census](#)).



24,762 (14% of population)

people in Boulder County are in service occupations ([U.S. Census](#)).



6.1% of all Boulder County families

live in poverty. 27% of all families with single mothers with children live in poverty.



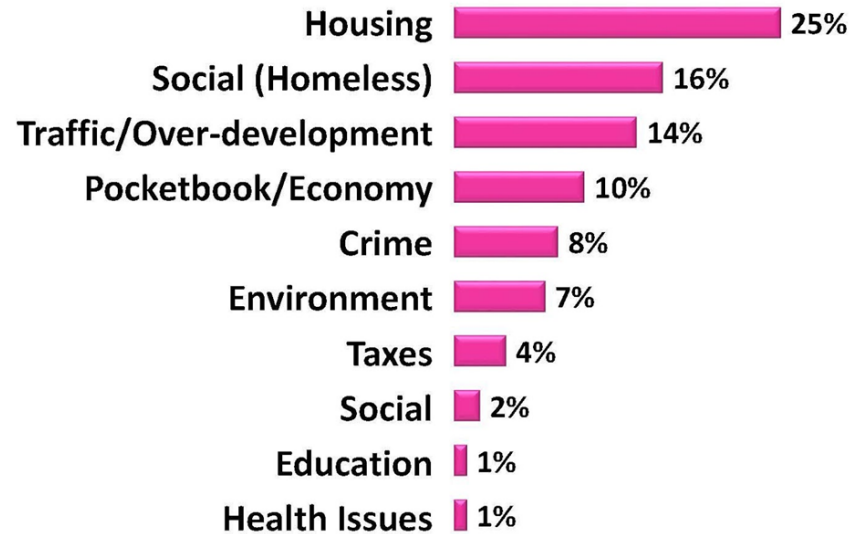
65% of Boulder County workers

drive alone to work and the mean travel time to work is now 24 minutes. The need to commute is increasing due to very high housing costs.

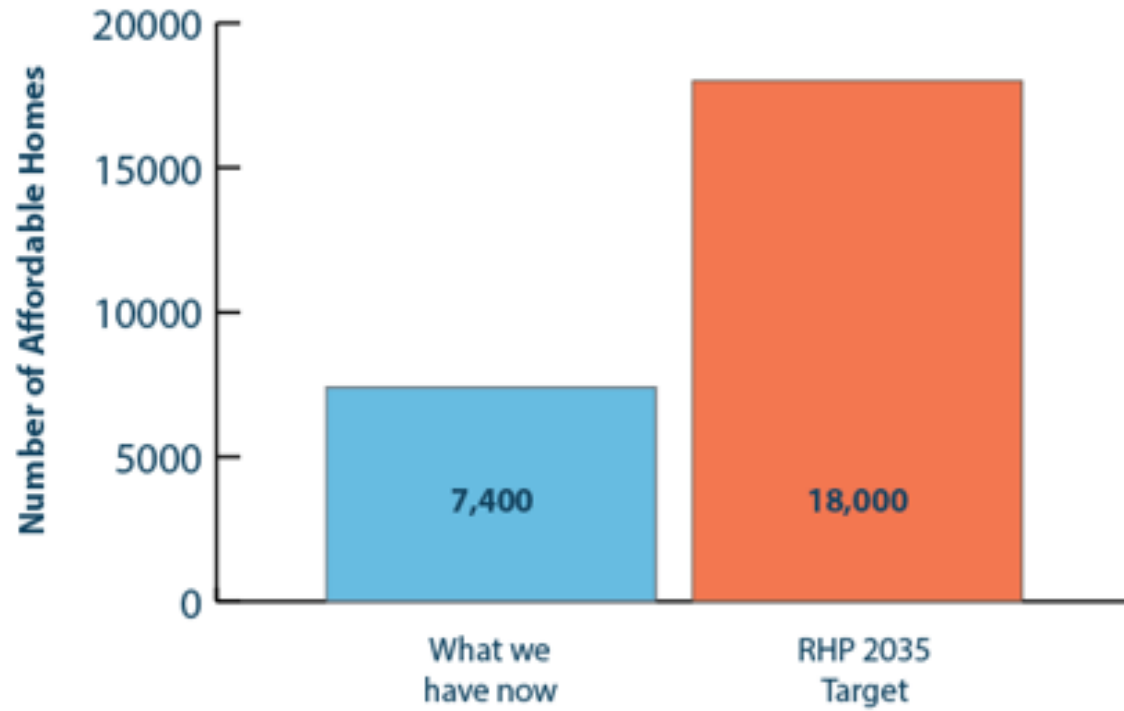
Affordable Housing: The Need



One-quarter of voters say the most important problem facing Boulder County is housing, followed by homelessness.



What would you say is the single MOST important problem facing Boulder County?



Affordable Housing: The Need



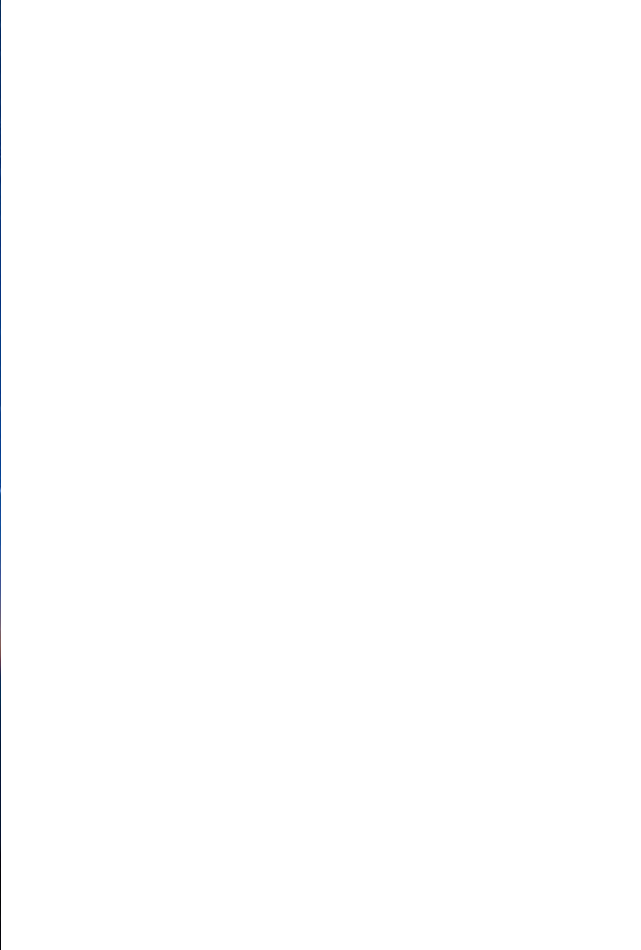
YESon1B.com

Affordable Housing: A Solution by Funding

Funding will be used for:

- 1. Development**
- 2. Affordable Housing**
- 3. Support Services**





Thank you!
Mloachamin@BoulderCounty.gov

Election: November 7th, 2023

