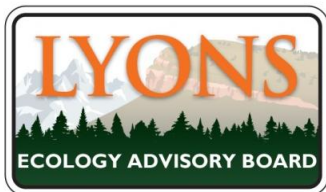




Lyons Walking Arboretum

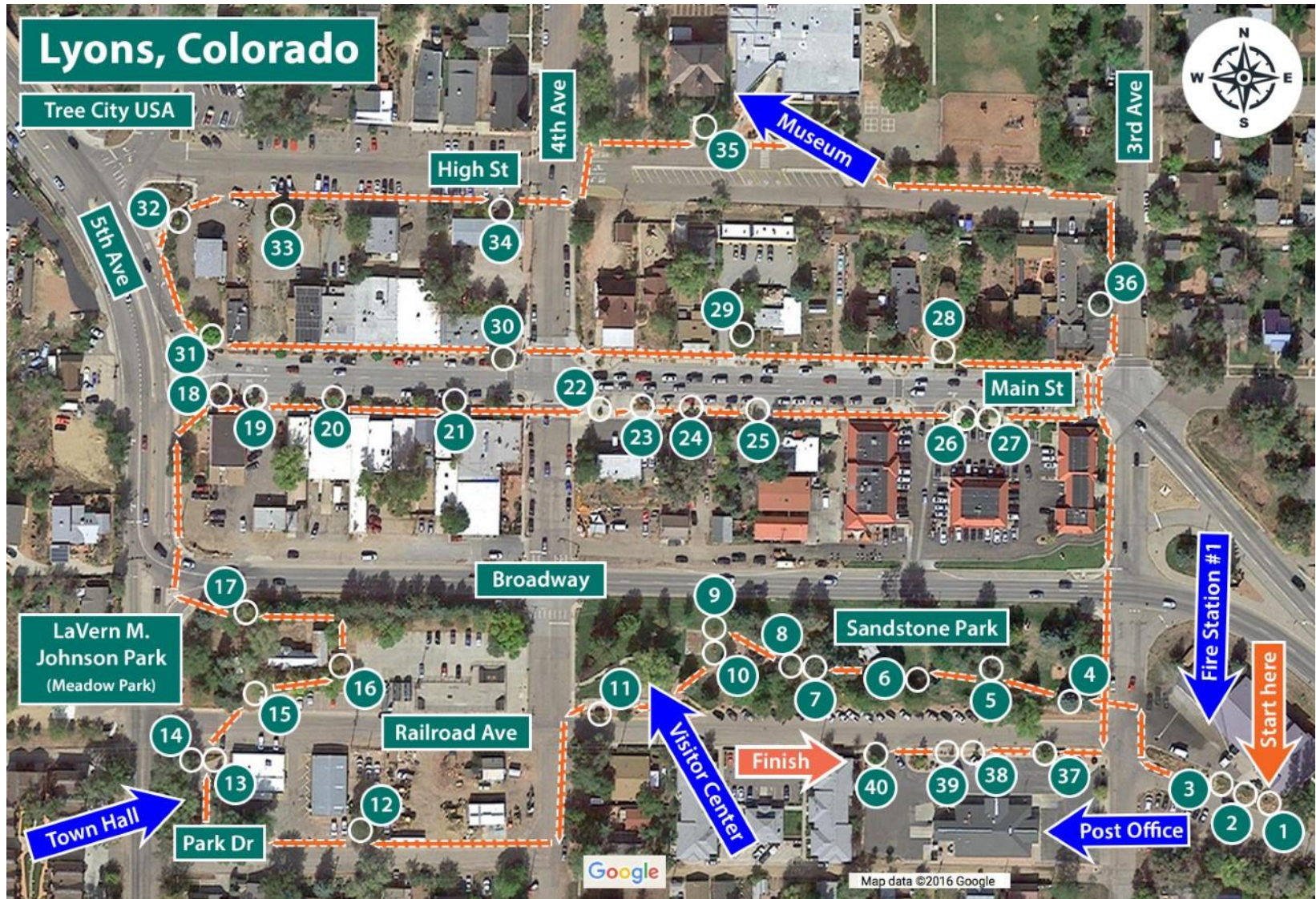


A cooperative effort between:

Illustrations by: Garima Fairfax GF



Lyons Walking Arboretum Self-Guided Tour Map

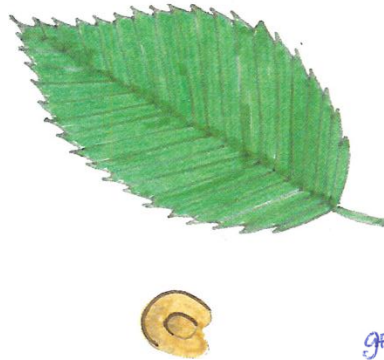




1. Bristlecone Pine ~ *Pinus aristata*

Pine Family

A small, bushy, evergreen conifer, 10 - 30 ft. tall, leaning and twisted. Dark-green needles in bundles of 5, 1-1/2 inches long, often dusted with white resin dots. Branches look like bottle-brushes. Cones are 2-1/2 inches long, with short delicate prickles. Slow growing. Hardy to zone 3, to 11,000 ft.



2. Emerald Sunshine Elm ~ *Ulmus propinqua*

Elm Family

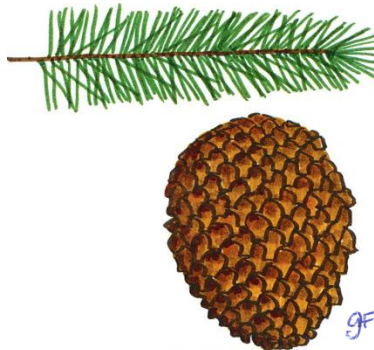
A deciduous tree, 25 - 30 ft tall, with an upright symmetrical vase shape. Leaves emerge coppery-bronze in spring, maturing to deep-green corrugated leaves in summer. Heat and drought tolerant, plus resistant to Dutch Elm disease and to desiccating winds. A tough, fast-growing shade tree. Hardy to zone 5, to 6000 ft.



3. Heritage Oak ~ *Quercus robur* X *macrocarpa*

Beech Family

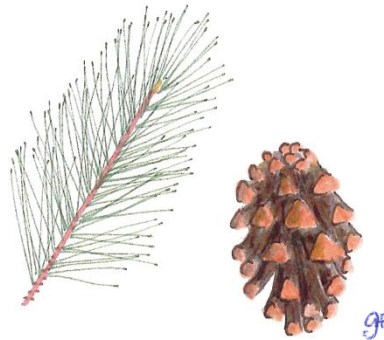
A cross between English Oak and Burr Oak. A deciduous tree, 50 ft. tall, in a pyramid-shape. Leaves are dark-green and leathery, with rounded lobes. Disease-resistant, extremely tough, and grows well in high pH soils. Hardy to zone 4, to 6000 ft.



4. Colorado Blue Spruce ~ *Picea pungens*

Pine Family

An evergreen conifer, 60 - 80 ft. tall, with a broad, conical shape and drooping branches. Needles are 1" long, blue-green, very stiff and prickly. Cones are 3" long, yellow-brown, with narrow, wavy scale tips. Bark gray, brown, and orange, and scaly. This is the state tree of Colorado. Hardy to zone 2, to 9000 ft.



5. Austrian Pine ~ *Pinus nigra*

Pine Family

An evergreen conifer, 50 - 60 ft. tall. A dense, sturdy tree with strong branches and a broad, conical shape. Needles are 4" long, 2 per bundle, and very dense along the twigs. Cones are 3" long, yellowish-brown to dark brown, and prickly. Bark has grayish-yellow plates. Hardy to zone 4, to 8000 ft.



6. Rocky Mountain Juniper ~ *Juniperus scopulorum*

Cypress Family

An evergreen conifer, 15 - 30 ft. tall, the crown rounded to conical, and sometimes with multiple trunks. Leaves are short overlapping scales, gray-green. Cones are small, blue-purple berries, with a whitish coating and 2 seeds. The bark exfoliates in flakes or strips. Native here, growing on rocky slopes. Hardy to zone 3, to 7500 ft.



GF

7. Siberian Elm ~ *Ulmus pumila*

Elm Family

A deciduous tree, to 50 ft. tall. Leaves are 1-1/2 long, with a toothed margin. Each seed is inside a circular papery wing, light-green and maturing to tan. A messy and brittle tree, weedy and invasive along streets and alleys. Not recommended for planting.



GF

8. Scotch Pine ~ *Pinus sylvestris*

Pine Family

An evergreen conifer, 25-50 ft. tall. The trunk is usually curved, with long branches. Needles are 2" long, blue-green and twisted, in bundles of 2. Cones 2" long, pointing backwards along the twigs, and not prickly. Bark is gray and scaly on the lower trunk, and bright rusty-orange on upper trunk and branches. Hardy to zone 2, to 8000 ft.



GF

9. Flowering Crabapple ~ *Malus* "Brandywine"

Rose Family

An upright, hardy ornamental tree, to 20 ft. tall. Flowers are rose-pink and fragrant, and form small, green fruits in late summer. Leaves are oval and green, turning maroon in fall. Hardy to zone 4, to 6500 ft.



GF

10. Flowering Crabapple ~ *Malus* "Spring Snow"

Rose Family

An upright, ornamental tree, to 20 ft. tall. Flowers are white and fragrant. Leaves are bright green, turning yellow in the fall. This is a fruitless variety. Hardy to zone 3, to 8000 ft.



GF

11. Japanese Tree-lilac ~ *Syringa reticulata*

Olive Family

A small deciduous tree or shrub, 15 - 30 ft. tall. Spreading branches form an oval crown, becoming more graceful with age. Flowers are creamy-white, in dense clusters 9" long, at the ends of the branches. They bloom May through July. Leaves are 5" long, opposite, and oval-shaped with a wavy margin. Native to Japan. Hardy to zone 3, to 7000 ft.



GF

12. Black Locust ~ *Robinia pseudoacacia*

Legume Family

A deciduous tree, 40 - 60 ft. tall. Upper trunk is curved and contorted. Flowers are white, showy, and fragrant, in 6" long hanging clusters in late spring. Leaves are compound, 11" long, with 7 - 9 oval leaflets, each 1-1/2" long. Pods are 3" long, flattened and abundant, often persisting into winter. Twigs have 1/2" sharp, stiff thorns. These trees can be invasive. Hardy to zone 3, to 5500 ft.



GF

13. Western Serviceberry / Saskatoon ~

Amelanchier alnifolia

Rose Family

A thicket-forming shrub, to 15 ft. tall. Flowers are white, with slender petals, in clusters at the ends of the twigs. Leaves are small and round, 2" long, with coarse teeth. Fruits are blueberry-like, dark reddish-purple. Native here on open hillsides and along streams. Hardy to zone 3, to 10,000 ft.



GF

14. Hoptree / Wafer Ash ~ *Ptelea trifoliata*

Rue Family

A deciduous shrub or small tree, to 20 ft. tall. Sparsely branched and slender, often leaning. Small fragrant green flowers bloom in early spring. Leaves are 5" long, with 3 smooth leaflets. The seed is in a wafer-like papery samara, 3/4" across. This tree is the only host of the Giant Swallowtail Butterfly larvae. Hardy to zone 3, to 9000 ft.

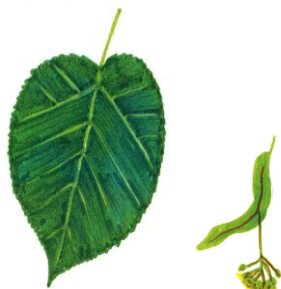


GF

15. Silver Maple ~ *Acer saccharinum*

Maple Family

A tall, fast-growing deciduous tree, 50 - 80 ft. tall. The crown is rounded, and pendulous branches turn up at the ends. Greenish-yellow flowers bloom in spring. Leaves are medium-green and palmate, 6-1/2" long, deeply lobed, and with long teeth. The underside of the leaf is silvery-white. The pairs of winged seeds are large and wide. Fall color is pale yellow. Hardy to zone 3.



GF

16. Greenspire Linden ~ *Tilia cordata*

Mallow Family

A type of Littleleaf Linden, with a beautiful conical shape, deciduous, up to 60 ft. tall. Small, fragrant yellow flowers bloom in spring, hanging below pale-green curved bracts. Leaves are 2 1/2" dark-green hearts, turning yellow in the fall. Native to Europe. Hardy to zone 3, to 7000 ft.



GF

17. American Basswood Linden ~ *Tilia americana*

Mallow Family

An upright deciduous tree with a rounded crown, 50 - 70 ft. tall. Fragrant creamy-white flowers bloom in summer, hanging in clusters below pale-green 4 1/2" long curved bracts. Leaves are large 7" long hearts, toothed and slightly lopsided, with the main veins palmate. Fruits are 1/4" round nuts in fall. Golden fall color. Hardy to zone 3, to 6000 ft.



GF

18. Burr Oak ~ *Quercus macrocarpa*

Beech Family

A large deciduous tree, 50 - 60 ft. tall, with a broad, spreading form. Leaves are 5 1/2" long, dark-green and fiddle-shaped. Acorns are unusually large, 2" long, with a shaggy fringed cap. Yellow-brown fall color, with leaves staying on the tree through winter. Drought resistant. Hardy to zone 3, to 7500 ft.



19. Flowering Pear ~ *Pyrus calleryana*

Rose Family

A deciduous tree, to 30 ft. tall, with a neat conical shape. Showy clusters of white flowers bloom in early spring, before the leaves. Dense, dark-green summer foliage of 2-1/2" oval leaves turn red in late fall. Hardy to zone 4, to 6500 ft.

GF



20. Hackberry ~ *Celtis occidentalis*

Hemp Family

A deciduous tree, 50 - 60 ft. tall, with a narrow, rounded crown. Green flowers bloom in spring. Leaves are light-green, 3-1/2" long, toothed, with a pointed tip and a broad uneven leaf-base. Fruits are small, round, and red. Fall color is yellow. Hardy to zone 3, to 7200 ft.

GF



21. Red Maple ~ *Acer rubrum*

Maple Family

A deciduous tree, 50 - 80 ft. tall. Flowers are red and hanging. Leaves are opposite and palmate, 4" long, with 3 triangular lobes. Fall foliage is bright-yellow to deep-red or maroon, with red pairs of 1" winged seeds. Twigs, flower buds, and leafstalks are also red. They produce a bumper crop of seeds every other year. Hardy to zone 3, to 7000 ft.

GF



22. Ponderosa Pine ~ *Pinus ponderosa*

Pine Family

An evergreen conifer, 60 - 70 ft. tall, with a long, clear trunk. Young trees have straight trunks and conical crowns, then they widen with age, forming broad crowns. Needles are 5 - 8" long, in bundles of 2 or 3, forming clumps at the branch tips. Cones are 4-1/2" long, reddish brown, with sharp prickles. Rusty-orange bark scales smell like butterscotch or vanilla. This is our most common tree here, growing all around Lyons in the mountains, up to Rocky Mountain National Park. Hardy to zone 2, to 9000 ft.

GF



23. Kentucky Coffeetree ~ *Gymnocladus dioica*

Legume Family

A deciduous tree, 50 - 60 ft. tall, with a spreading, irregular form. Fragrant white flowers bloom from April to June on 4" spikes. Leaves are 30" long, doubly compound, with 5 - 9 pairs of side-stalks, each with 6 - 14 oval, pointed leaflets, 2-1/4" long. Leaves emerge late and fall early. Pods are 5" long, short and fat, orange-brown, then turn blackish as they linger into winter. Hardy to zone 3, to 6500 ft.

GF



24. Baldcypress ~ *Taxodium distichum*

Cypress Family

A deciduous conifer (unusual, but not unique) to 80 ft. tall. Pale-green needles are 3/4" long, soft and feathery, lying flat on the twigs like feathers. They turn golden-brown to purplish in late autumn, and then fall off. Female cones emerge small, green, and spiky, and then become 1" round brown cones with woody scales. Male pollen cones are in 7" long dangling catkins. Hardy to zone 4, to 7000 ft.

GF



GF

25. Scarlet Oak ~ *Quercus coccinea*

Beech Family

A deciduous tree, 60 - 80 ft. tall. Leaves are dark-green 6" long, and deeply lobed, with 7 bristle-tipped lobes. Acorns are 3/4" inch long, with deep cups covered in warty scales. Scarlet Oaks have magnificent fall color, a brighter red than most oaks. Hardy to zone 4.



GF

26. Columnar Oak ~

Quercus robur var. *Fastigiata*

Beech Family

A variety of English Oak, 30 - 50 ft. tall, with a narrow and dense columnar shape. Dark-green leaves have rounded lobes and turn a dramatic golden-yellow in fall, then brown. Hardy to zone 4, to 8000 ft.



GF

27. Mountain Maple ~ *Acer spicatum*

Maple Family

A small, deciduous tree, 10 - 25 ft tall, with a short trunk and a spreading crown. Flowers are small and yellow, in erect spikes. Leaves are palmate, 6" long, with 3 - 5 shallow, pointed lobes. Winged seeds turn brilliant rosy-red in summer, and leaves turn bright yellow to red in autumn. Hardy to zone 2.



GF

28. Southwestern White Pine ~

Pinus strobiformis

Pine Family

A slender, straight evergreen conifer, 60 - 80 ft. tall. Needles are 3-1/2" long, and thin, in bundles of 5. Cones are 8" long, with scale tips strongly reflexed. The bark is gray and scaly. Hardy to zone 4, to 9000 ft.



GF

29. Mountain Ash ~ *Sorbus aucuparia*

Rose Family

A deciduous tree, 20 - 40 ft tall, with a rounded crown. Flowers are small and white, in clusters. Leaves are compound, 7" long, with 11 - 17 leaflets, each 1-1/2" long, and toothed. Bright orange-red berries in flat-topped clusters attract birds. Fall color is red to yellow. Hardy to zone 3.

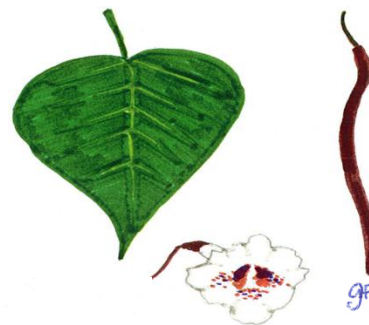


GF

30. Honeylocust ~ *Gleditsia triacanthos*

Legume Family

A deciduous tree, 60 - 80 ft. tall, pyramid-shaped. Leaves are compound, 6" long, with 15 - 30 leaflets, each 1" long. Twig tips have clusters of arching leaves. Seed pods are 8" long, and reddish-brown. Fall color is yellow. Long spines grow on the trunk and branches, but there are spineless cultivars. Hardy to zone 3.



GF

31. Northern Catalpa ~ *Catalpa speciosa*

Trumpet Creeper Family

A deciduous tree, 40 - 60 ft. tall, with an oval to irregular shape. The trunk is often twisted at the base, thick, but tapering quickly. Flowers are large, white, and showy, bell-shaped, with yellow and purple markings. Giant heart-shaped leaves are 8" long, bright yellow-green, and opposite. Seed pods are 14" long, and slender, turning from green to dark-brown. Yellow fall color. Hardy to zone 4.



GF

32. Mugo Pine ~ *Pinus mugo*

Pine Family

A small, bushy evergreen tree, to 20 ft. tall. Needles dark green and stiff, 2" long, and 2 per bundle. Cones 1-1/2" long, gray-brown and lopsided, stalkless, and with small prickles. Hardy to zone 3.



GF

33. Norway Maple ~ *Acer platanoides*
Maple Family

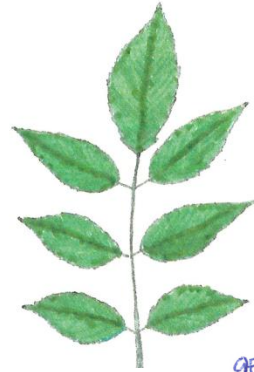
A dense deciduous tree, to 50 ft. tall, and a classic shade tree. Flowers bright yellowish-green, appearing in rounded clusters before the leaves emerge in early spring. Leaves are deep-green, 5" long, 5-lobed and very broad. The edges tend to curl up, and they have milky sap. Seeds are in winged pairs, spreading wide. Fall color is late, a dull yellow or orange. Hardy to zone 4.



GF

34. Canada Red Chokecherry ~
Padus virginiana "Schubert"
formerly *Prunus virginiana*
Rose Family

A small deciduous tree, to 20 ft. tall, a cultivar of our native chokecherry. Flowers are small and white, arranged in 5" long tubular clusters. Leaves are maroon-purple, 4" long, widest just above the middle. Hardy to zone 3, to 8000 ft.



GF

35. Green Ash ~ *Fraxinus pennsylvanica*
Olive Family

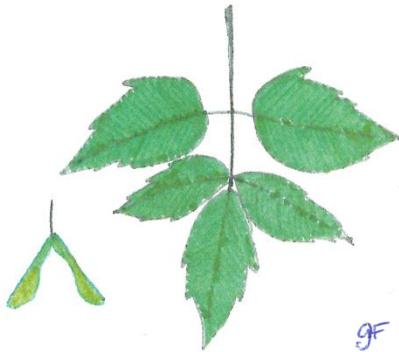
A deciduous tree, 40 - 60 ft. tall. Leaves are compound, 9" long, with 5 - 9 leaflets. Seeds are in 1-1/2" long wings, greenish-yellow to tan. Yellow fall color. Hardy to zone 3. This beautiful, hardy tree is not currently recommended for planting, due to an invasive pest called the Emerald Ash Borer. These insects cause trees to sicken and die by cutting off the water supply to the tops of the trees.



GF

36. Douglas Fir ~ *Pseudotsuga menziesii*
Pine Family

An evergreen conifer, 50 - 80 ft. tall, with a pyramidal form. Needles are 1" long, soft and blue-green, not prickly. The cones are distinctive, with protruding 3-pointed bracts, and no prickles. Native in our montane forests, and north-facing slopes lower down. Hardy to zone 3, to 8500 ft.



GF

37. Boxelder ~ *Acer negundo*
Maple Family

A deciduous tree, to 60 ft. tall, often with multiple leaning trunks. Female and male flowers are on separate trees, both of them in drooping clusters on long stalks before the leaves emerge in early spring. Leaves are a dull pale-green and compound, with 3 or 5 leaflets, each 3-1/2" long, with jagged teeth. Seeds are in winged pairs, V-shaped. Yellow fall color. Hardy to zone 3.



GF

38. American Sycamore ~
Platanus occidentalis
Sycamore Family

A large deciduous tree, 50 - 80 ft. tall, with a spreading form. The most massive tree east of the Rockies. Red flowers bloom in spring. Leaves are large, dull-green and palmate, 7" long, with 3 or 5 toothed lobes. Fruit a 1-1/4" bumpy ball, hanging singly on a 5" stalk. Yellow fall color. Hardy to zone 4.



GF

39. Chinquapin Oak ~
Quercus muehlenbergii
Beech Family

A deciduous tree, 40 - 50 ft. tall. Glistening dark-green leaves, 5" long, with rounded teeth. Acorns small, 1" long, with a tight cap covering almost 1/2 of the nut. Yellow-orange fall color. Hardy to zone 4, to 6500 ft.



GF

40. Red Oak ~ *Quercus rubra*
Beech Family

A large deciduous tree, to 80 ft. tall, with spreading branches. Flowers are green, in long catkins. Leaves are 7" long, with 7 bristle-tipped lobes, and red leafstalks. Acorns are 1" long, with a shallow cap. The bark is gray and deeply ridged. Fall colors are reds, oranges, and yellows. Hardy to zone 3.