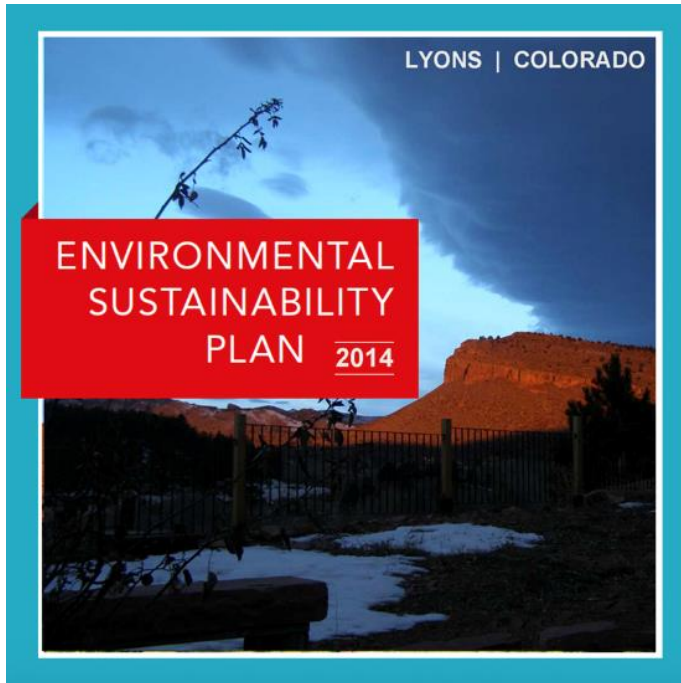


# RESIDENTIAL HAULING

Board of Trustees Meeting (3/18/2019)



# SUSTAINABLE PRIORITIES



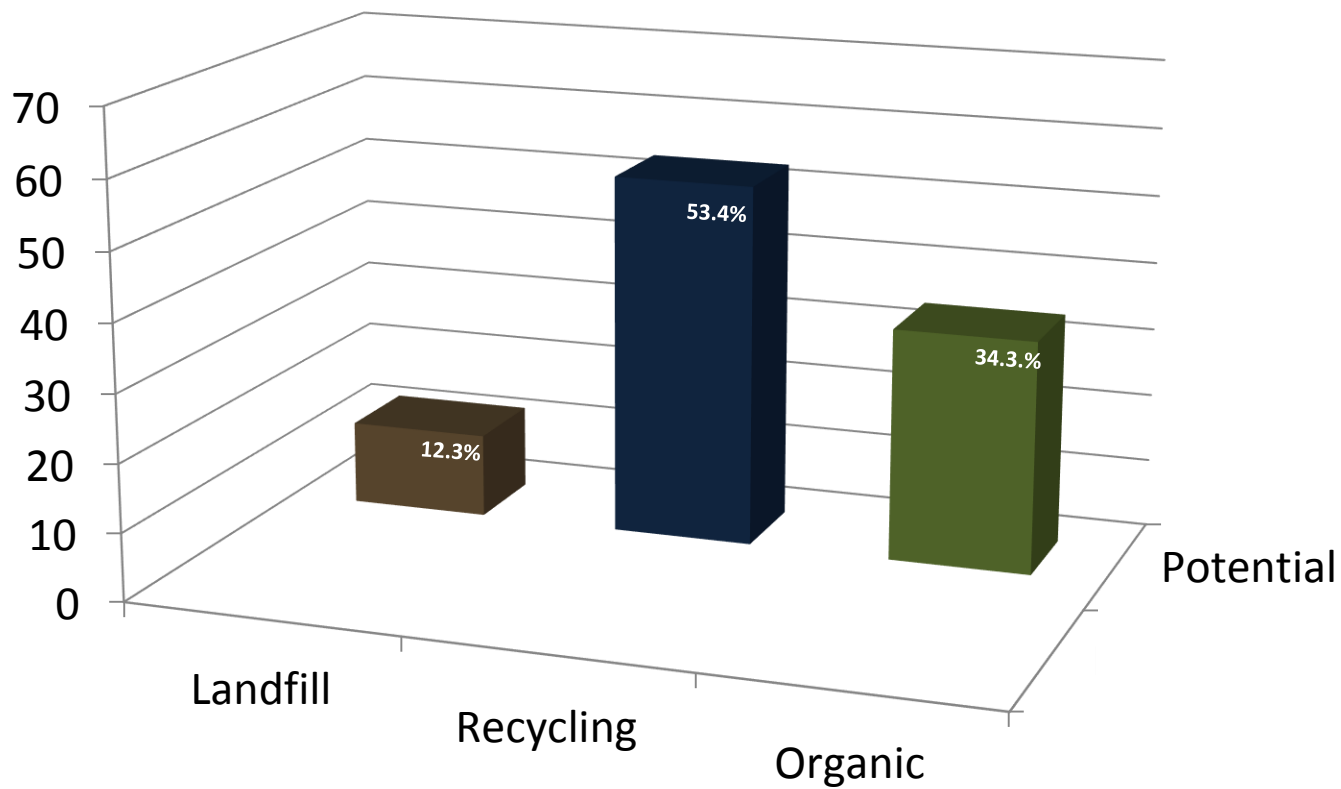
## Waste Goals:

- Reduce the amount of solid waste sent to landfills
- Support recycling and composting programs
- Strive towards zero waste and manage resources responsibly and effectively

# DIVERSION RATES



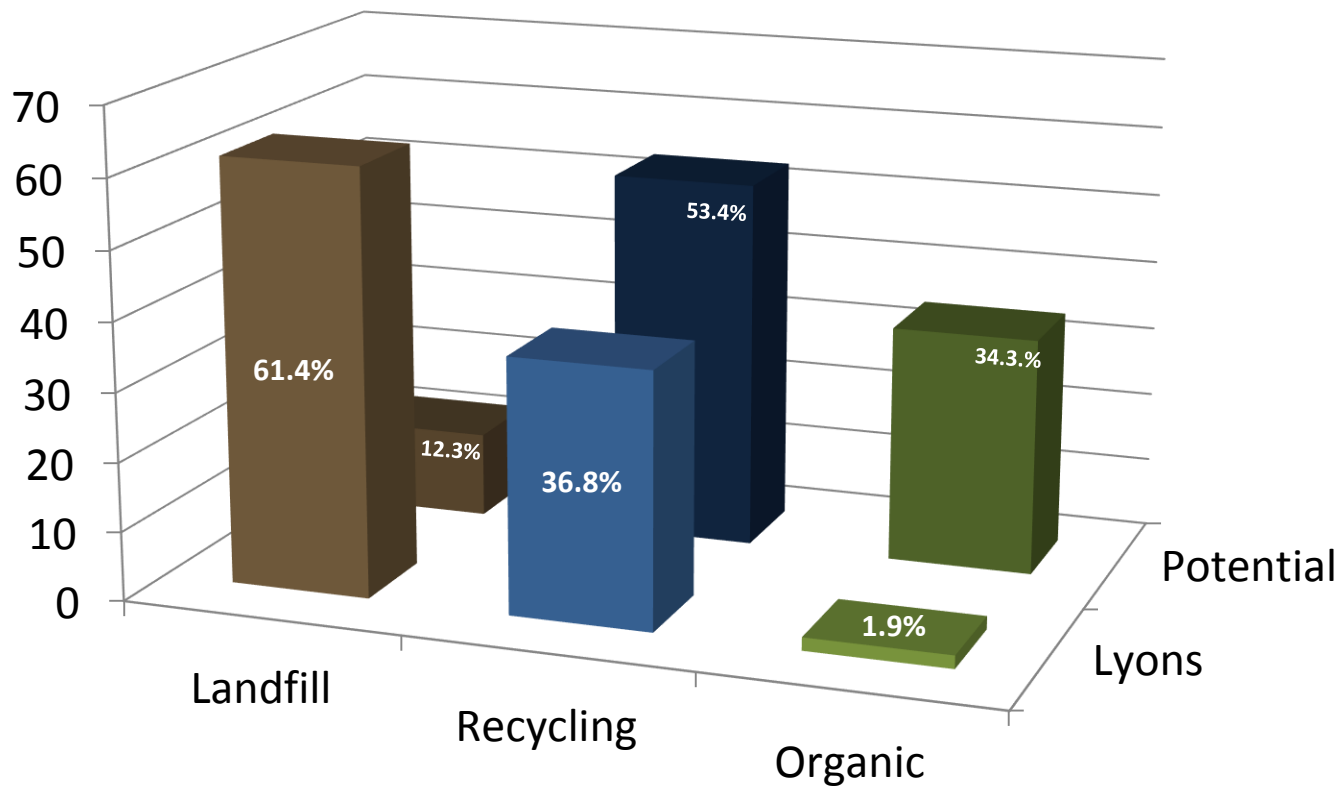
## EPA Materials Study (2014)



# DIVERSION RATES



## Lyons Diversion Versus Potential EPA





# RESIDENTIAL SERVICE OPTIONS



## Business As Usual



## Business As Usual +



## PAYT: Multiple Hauler



## PAYT: Single Hauler

DROP OFF

- ☐ Recycling Center
- ☐ Yard Waste Drop Off (seasonal)

- ☐ Recycling Center
- ☐ Yard Waste Drop Off +
- ☐ Scrap Metal Drop-Off

- ☐ Recycling Center
- ☐ Yard Waste Drop Off (optional)
- ☐ Scrap Metal Drop-Off (optional)

- ☐ Recycling Center
- ☐ Yard Waste Drop Off (optional)
- ☐ Scrap Metal Drop-Off (optional)

CURB SIDE

- ☐ Multiple Haulers
- ☐ Recycling Optional

- ☐ Multiple Haulers
- ☐ Recycling Optional

- ☐ Multiple Haulers
- ☐ Trash (Variable Cost)
- ☐ Embedded Recycling

- ☐ One Hauler
- ☐ Trash (Variable Cost)
- ☐ Embedded Recycling
- ☐ Embedded Organic

ORDINANCE

**Pay As You Throw** is a trash rate strategy that charges households a higher bill for putting out more trash for collection. Normally, variable rates for variable sizes of container. Haulers can set their own rates but are required to embed the cost of recycling (and composting) in those rates.

- ☐ Revised Hauler Ordinance to include PAYT requirements

- ☐ Revised Hauler Ordinance to include PAYT & Single Hauler requirements

# BENEFITS & CHALLENGES



## Business As Usual

- Does Not Increase Diversion`
- Not in alignment with goals and aspirations



## Business As Usual +

- Incremental Increase in Diversion (+)
- Needs Labor
- Cost to Town



## PAYT: Multiple Hauler

- Increase Diversion (++)
- Won't Capture Households who don't already subscribe to trash services
- Cost will go up to residents
- Will not capture organics due to cost
- More convenient



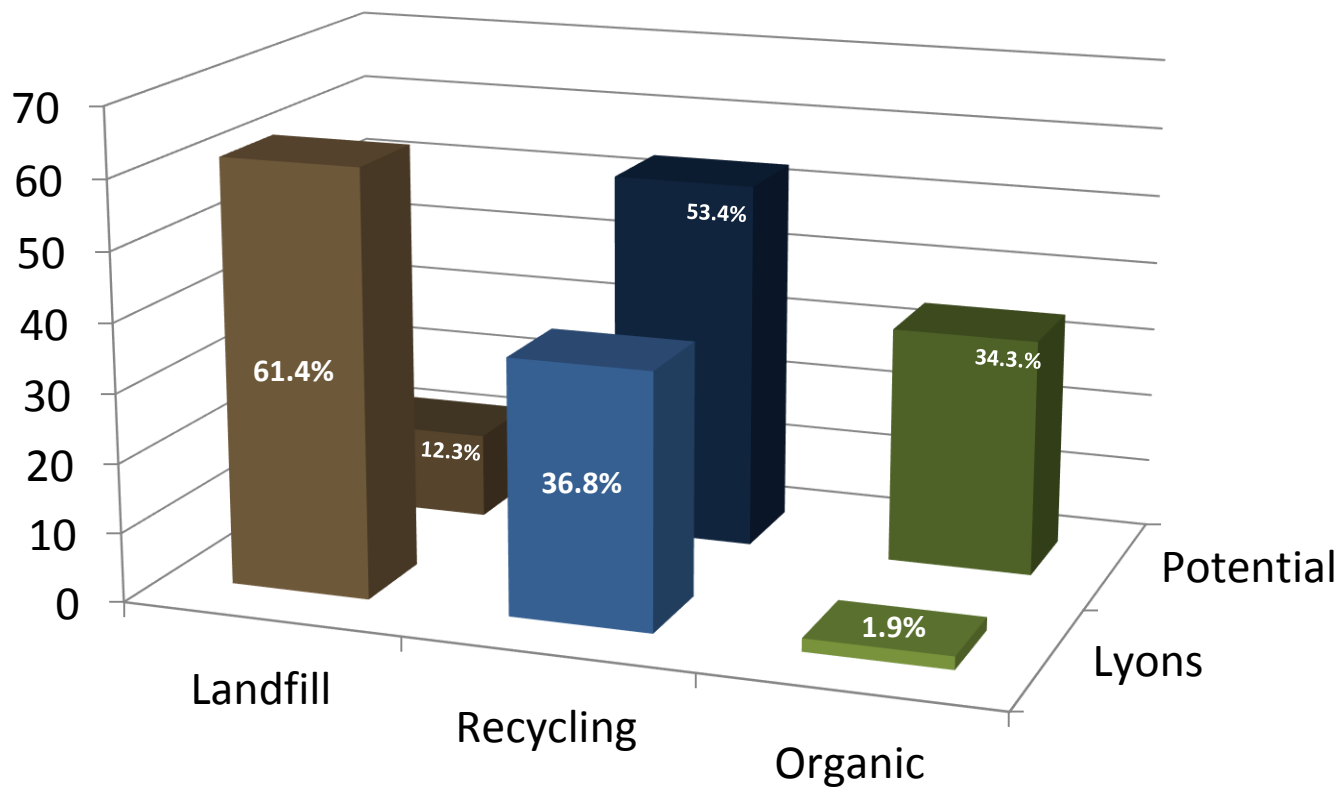
## PAYT: Single Hauler

- Increase Services & Diversion(+++)
- Will capture Households who don't subscribe to trash services
- Cost to subscribers will stay the same or be lower due to economies of scale
- Capture organics
- More convenient / Plus Reduction of trucks
- Billed through?
- Cost & management of totes
- Potential public resistance due to loss of choice

# DIVERSION RATES



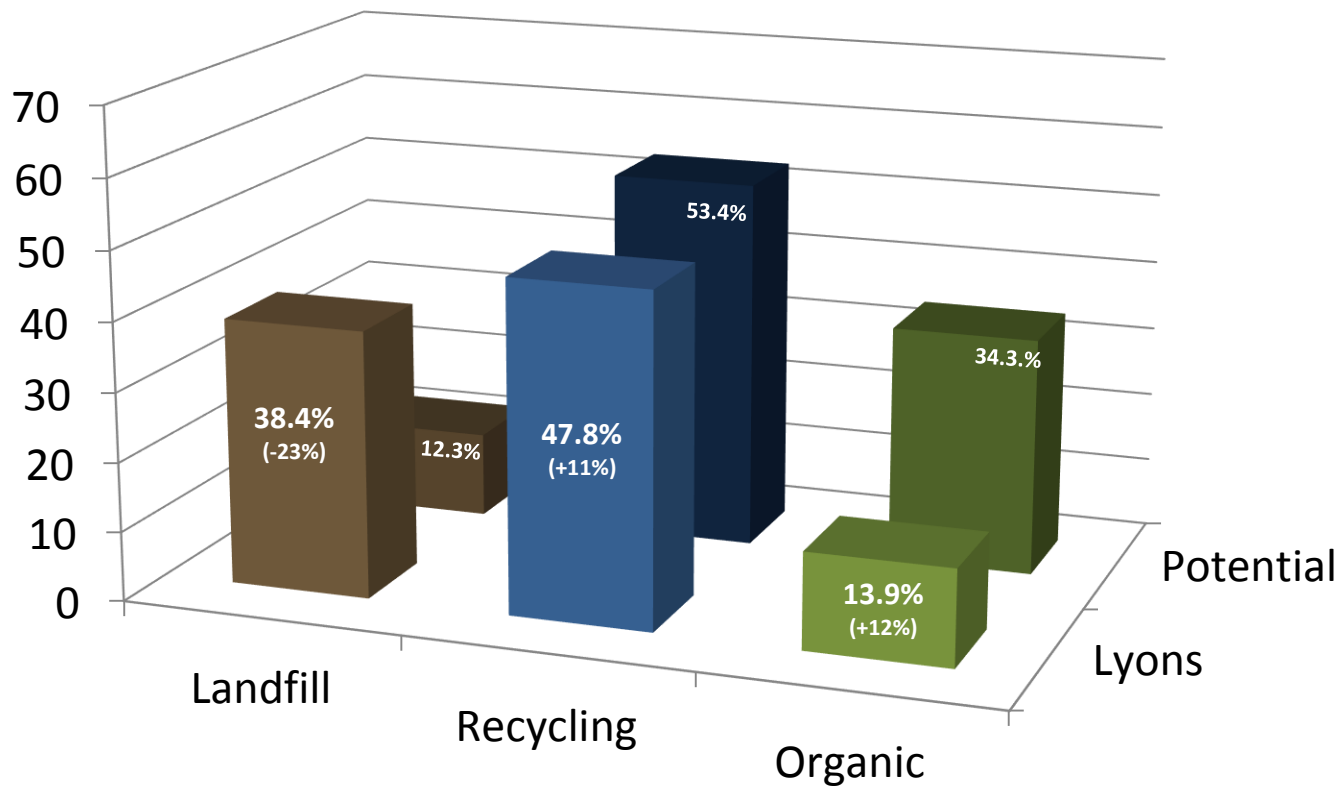
## Lyons Diversion Current



# DIVERSION RATES WITH PAYT



## Lyons Diversion with Pay-As-You-Throw





City	PAYT Type	Rates (32/64/96 gal)	Composting options
Longmont	Municipal Service	\$6.50 / \$12.90 / \$24	\$6.60
Loveland	Municipal Service	\$3 min / \$6 / \$12 / \$18	\$8; yard only; seasonal
Boulder	Open Market	\$32.30 / \$44.30 / \$57.10	Included
Fort Collins	Open Market	\$13 / \$26 / \$39	None
Edgewater	Single Hauler	\$8 EOW / \$10 / \$15 / \$20	\$5; seasonal
Golden	Single Hauler	\$6.20 EOW / \$7.50 / \$12.60 / \$19.25	\$9.45
Lafayette	Single Hauler	\$8 / \$16.50 / \$24.50	\$4.45 / \$7.79 / \$11.13
Louisville	Single Hauler	\$14.67 / \$23.02 / \$31.37	Included
Sheridan	Single Hauler	\$6 mini / \$7.80 / \$12.48 / \$19.97	\$7; seasonal

*Note: Numbers from 6 months ago*

# PROCESS TIMELINE



Action	Date	Comments
<b>Waste Diversion Discussions</b>	Prior to 2/26/2018	Multiple discussion at SFC and waste working group meetings.
<b>Emailed Haulers Invitation to Board of Trustees Presentation</b>	2/26/2018	Emailed all current residential haulers (One Way, Western & United) inviting them to SFC presentation to Board of Trustees.
<b>SFC Presentation to the Board of Trustees</b>	3/5/2018	Presented waste data and the concept of Pay As You Throw (PAYT). Upon reviewing the pros and cons the BoT directed staff to issue an RFI/RFP to unearth some of the unknowns to help inform decision making.
<b>Staff Drafted RFP</b>	4/19/2018	
<b>SFC Meeting to Review RFP</b>	4/24/2018	Planned to discuss RFP but never shared it. A Western representative was at the meeting and asked for Eco-Cycle declare any conflicts of interest before providing guidance to the Town.
<b>Eco-Cycle Provided Conflict of Interest Statement</b>	5/10/2018	EcoCycle sent staff a response to the conflict of interest concern. Staff forwarded this letter and RFP to legal to review.

**CONCURRENTLY TOWN RFP FOR – CHANGE OF TOWN COUNSEL/ATTORNEY**

# PROCESS TIMELINE



Action	Date	Comments
<b>Legal Provided Feedback on the RFP/RFI</b>	10/2/2018	Attorney reviewed and revised the draft RFP. Town Counsel recommend that the RFP should be sent as an RFI and that we should consider including a clause that would only allow firms who responded to the RFI to submit any future RFP (this was to encourage response).
<b>Eco-Cycle Provided Feedback on the RFI</b>	10/26/2018	Policy experts at Eco-Cycle reviewed the RFI and provided feedback including language to protect the Town against annual cost increases.
<b>Issued RFI</b>	11/30/2018	Issued RFI on Rocky Mountain E-Purchasing System.
<b>Emailed Haulers RFI</b>	12/3/2018	Staff also emailed all current residential haulers directly (One Way, Western & United) copy of RFI inviting them to send in a response.
<b>RFI Questions Due</b>	12/10/2018	Only received follow up questions from Western.
<b>RFI Responses Due</b>	1/3/2019	Only received a timely submission to RFI response from Western.

# PROCESS TIMELINE



Action	Date	Comments
<b>Board of Trustees Workshop</b>	2/19/2019	Presented responses and proposed costs to the BoT who requested a public meeting to get input before moving forward.
<b>One-Way Emailed Town Staff</b>	2/22/2019	One Way emailed staff stating that they sent a paper proposal by mail in December, 2018. Staff never received the paper copy. Bid requirements were for electronic submissions. On 2/26, staff requested that they re-send a copy of their response.
<b>One-Way Emailed Response</b>	3/1/2019	One Way emailed a scanned copy of their response dated 12/3/18.
<b>Staff met with Legal</b>	3/11/2019	Staff met with legal to discuss how to move forward. Legal stated that if the BoT decides to move forward with a PAYT ordinance, the Town needs to follow Colorado statute (CRS Section 30-15-401 et seq.) which includes: providing written notice to all firms currently serving residents in Lyons; and give six-month public notice in a newspaper(s).
<b>Board of Trustees Meeting for Public Comment</b>	3/18/2019	

# BENEFITS & CHALLENGES

BEFORE RFI RESPONSE



## Business As Usual

- Does Not Increase Diversion`
- Not in alignment with goals and aspirations



## Business As Usual +

- Incremental Increase in Diversion (+)
- Needs Labor
- Cost to Town



## PAYT: Multiple Hauler

- Increase Diversion (++)
- Won't Capture Households who don't already subscribe to trash services
- Cost will go up to residents
- Will not capture organics due to cost
- More convenient



## PAYT: Single Hauler

- Increase Services & Diversion(+++)
- Will capture Households who don't subscribe to trash services
- Cost to subscribers will stay the same or be lower due to economies of scale
- Capture organics
- More convenient / Reduction of trucks
- Billed through?
- Cost & management of totes
- Potential public resistance due to loss of choice



# BENEFITS & CHALLENGES

AFTER RFI RESPONSE



## Business As Usual

- Does Not Increase Diversion`
- Not in alignment with goals and aspirations



## Business As Usual +

- Incremental Increase in Diversion (+)
- Needs Labor
- Cost to Town



## PAYT: Multiple Hauler

- Increase Diversion (++)
- Won't Capture Households who don't already subscribe to trash services
- Cost will go up to residents
- Will not capture organics due to cost
- More convenient



## PAYT: Single Hauler

- Increase Services & Diversion(+++)
- Will capture Households who don't subscribe to trash services
- Cost to subscribers will stay the same or be lower due to economies of scale
- Capture organics
- More convenient / Reduction of trucks
- Billed through Town
- Cost & management of totes by Hauler
- Potential public resistance due to loss of choice

# COST COMPARISONS



		WESTERN CURRENT	ONE WAY CURRENT	PROPOSED
TRASH	32 gallon	\$ 37.85	\$ 20.00	<b>LESS THAN JUST TRASH FOR ALL 3 SERVICES</b>
	64 gallon	\$ 40.85	\$ 22.00	<b>SAME AS TRASH &amp; RECYCLING FOR ALL 3 SERVICES</b>
	96 gallon	\$ 44.95	\$ 24.00	<b>MORE FOR ALL 3 SERVICES</b>
	Prepaid Bags	\$ 6.70	YES	Not available
RECYCLE	96 gallon	Not available	\$ 5.00	FREE (EOW)

# WINNERS & LOSERS



		WESTERN CURRENT	ONE WAY CURRENT	PROPOSED
TRASH	32 gallon	\$ 37.85	\$ 20.00	LESS THAN JUST TRASH FOR ALL 3 SERVICES
	64 gallon	\$ 40.85	\$ 22.00	SAME AS TRASH & RECYCLING FOR ALL 3 SERVICES
	96 gallon	\$ 44.95	\$ 24.00	MORE FOR ALL 3 SERVICES
	Prepaid Bags	\$ 6.70	YES	Not available
RECYCLE	96 gallon	Not available	\$ 5.00	FREE (EOW)

# BENEFITS & CHALLENGES

AFTER RFI RESPONSE



## Business As Usual

- Does Not Increase Diversion`
- Not in alignment with goals and aspirations



## Business As Usual +

- Incremental Increase in Diversion (+)
- Needs Labor
- Cost to Town



## PAYT: Multiple Hauler

- Increase Diversion (++)
- Won't Capture Households who don't already subscribe to trash services
- Cost will go up to residents
- Will not capture organics due to cost
- More convenient



## PAYT: Single Hauler

- Increase Services & Diversion(+++)
- Will capture Households who don't subscribe to trash services
- Cost to subscribers will stay the same or be lower due to economies of scale
- Capture organics
- More convenient / Reduction of trucks
- Billed through Town
- Cost & management of totes by Hauler
- Potential public resistance due to loss of choice

# 2018 ECO-CYCLE SURVEY

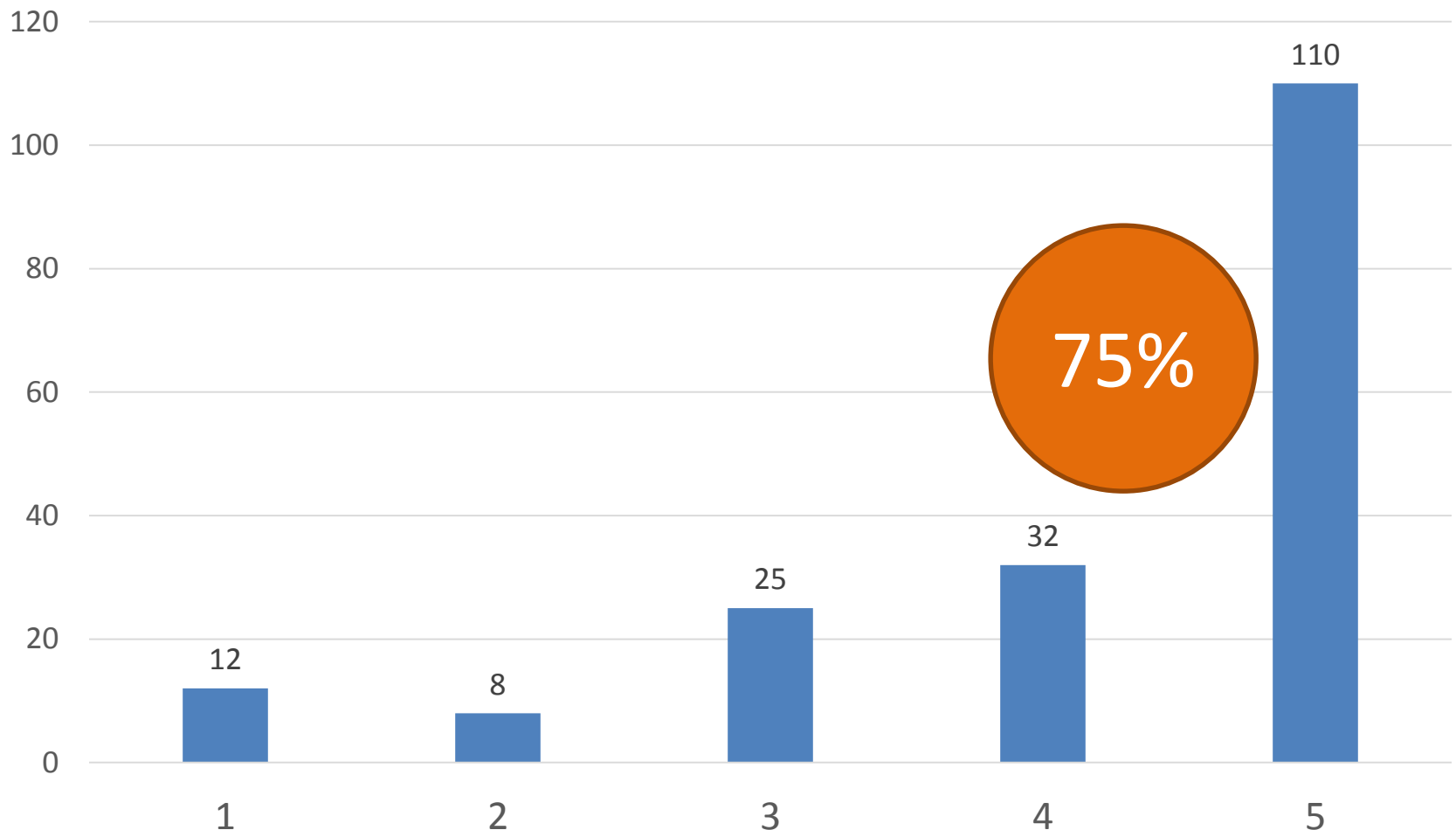
## Residential Canvas Methods:

- 3 groups of 3 Lyons Middle/Senior High students went door-to-door
- All surveys were taken face-to-face with tablets. No paper copies
- At the end of the survey, residents were asked to take a 30-day pledge to reduce their waste in their home.
- 190 participants took the survey
- 173 participants took the pledge



# 2018 ECO-CYCLE SURVEY

On a scale of 1-5, how would you feel about the town negotiating with a single hauling company to provide curbside trash, recycling, and composting services at a reduced cost? (1 = strongly oppose, 5 = strongly support)



# SUMMARY



## Benefits

- ☐ Up to 20% Increase Diversion Rates
- ☐ Increases Curbside Services for Everyone (Trash, Recycling & Compost)
- ☐ More Convenient for Residents
- ☐ Reduction of Trucks on Streets
- ☐ Average Cost to Subscribers Will Be Lower or Stay the Same
- ☐ Savings from Reduction of Recycling Center Use Could Be Used for Other Waste Services
- ☐ No Upfront Cost to the Town
- ☐ All Service & Communication Done By Hauler
- ☐ Bear Proof Bins Could Potentially Be Provided for Small Fee

## Challenges

- ☐ Billing Through Town Utility (needs administration)
- ☐ Lowest and Highest Trash Generators Pay Slightly More
- ☐ Loss of Choice for Residents and Perceived Loss of Competition

# TIMELINE

## PER LEGAL

Legal requirements if the Board decides to move forward with a single hauler system:

1. The Town will be required to post a notice to existing haulers and to the newspaper of general circulation stating the date and area in which the policy change will take place (minimum of 6 month notice)
2. The notice must provide a 30 day period for potential providers to request the opportunity to submit a RFP to provide residential waste services.
3. If a request is received the Town must follow a statutorily defined RFP process.
4. The RFP must be mailed to all eligible carriers.
5. Town selects carrier based on RFP criteria.
6. Service begins upon end of 6 month notice period.